



# DESTINATION: **TOPANGA**

**ESSENTIAL GUIDE & DIRECTORY**

**COMPLIMENTS OF  
THE TOPANGA CHAMBER OF COMMERCE**





# Welcome to Topanga Canyon

Topanga Canyon is a landscape of wild beauty, a natural and recreational treasure, inhabited by an eclectic, bohemian-spirited society—and accessible to all. From the ocean or the Valley, a journey into Topanga along its winding “Main Street,” Topanga Canyon Boulevard (Scenic Highway 27) is a step into a world vastly different from the surrounding Los Angeles metropolis. Bordered by parklands and the sparkling Pacific, Topanga is a sanctuary for wildlife and home to one of California's most vibrant and creative communities.

Come immerse yourself in the beauty of our Canyon and recharge! Whether you're exploring our panoramic trails, savoring the local flavors, or trying on a custom-made hat or belt, find a slice of heaven on Route 27.

## THE TOPANGA CHAMBER OF COMMERCE BOARD OF DIRECTORS / OFFICERS

- **PRESIDENT** – Ronald Fomalont  
Law Offices of Ronald Fomalont
- **VICE PRESIDENT** – Roger Pugliese  
Topanga Association for a Scenic Community; EMI MOON Productions
- **TREASURER** – Ron Kramer  
Kramer Accountancy Corporation
- **COMMUNITY LIAISON** – Joseph Rosendo  
Joseph Rosendo Presents, Inc.
- **MEMBERSHIP CHAIR** – Robyn Bensinger  
Home Productions US
- **SOCIAL MEDIA & ADVERTISING CHAIR** – Max Kramer  
Kramer Insurance Services
- **BOARD MEMBER-AT-LARGE** – Tommy Tucker  
Tommy Tucker Time: Vintage Signs, Murals, Set Design
- **PUBLICATIONS CHAIR** – Diana Mathur  
Writer for Hire; Dancing Crone Press

*The Board and Officers gratefully acknowledge the excellent contributions of:*

Dianne Porchia, Chamber Secretary and Newsletter Correspondent  
Porchia's WISH - Whole Integrated Self Health

## THE TOPANGA CHAMBER OF COMMERCE

310.560.4649 • PO Box 185, Topanga CA 90290  
[topangachamber.org](http://topangachamber.org)

Connect with us  

*This publication was made possible thanks to the generous support of Third District Supervisor Lindsey Horvath and the Topanga Business Interruption Fund.*

*Extra copies are available from The Topanga Chamber of Commerce, 10 for \$20*



# The Topanga Chamber of Commerce

## Helping Business Thrive... Naturally!

Founded in 1948, the Topanga Chamber of Commerce is the Canyon's longest-standing civic organization, dedicated to serving both residents and visitors. Our mission is to cultivate a thriving local economy while preserving Topanga's unique character. We champion sustainable growth, safeguard natural landscapes and wildlife, support one another as a community, and celebrate the unparalleled Topanga Canyon lifestyle.



View or download the digital version of  
**DESTINATION: TOPANGA**  
Essential Guide & Directory

## TABLE OF CONTENTS

Welcome to Topanga Canyon .....	2	Camps, Schools & Children's Instruction .....	25
The Topanga Chamber of Commerce		Coaching, Counseling & Retreats .....	27
Board Of Directors / Officers .....	2	Contractors & Handyworkers .....	29
Connect With Us .....	2	Entertainment, Theater, Dance & Music .....	31
The Topanga Chamber of Commerce .....	3	27 Things to Do on Route 27 .....	32
Digital Version <i>DESTINATION:TOPANGA</i> .....	3	Topanga Area Map .....	33
Topanga ... ..	4	Visitor Fuh Map .....	34-35
Let's Support One Another and Thrive Together .....	6	Topanga, California Map .....	36-37
Connect & Contribute .....	7	Detail Maps: Topanga Center, Top'o Topanga, Lower Fernwood .....	38-39
Message from Supervisor Lindsay Horvath .....	7	Financial Services .....	43
Stay Safe & Healthy in Topanga Canyon .....	8	Graphics & Web Design .....	43
Get Involved With Emergency Preparedness Volunteer Organizations .....	9	Health, Healing & Fitness .....	43
Know Your Zone For Evacuation Advisories .....	9	Home & Garden: Maintenance & Supplies .....	47
During A Community Emergency, Stay Informed With: .....	10	Insurance Services .....	47
Community Events Calendar .....	11	Legal Services .....	49
Accommodations, Event Locations: Studios .....	13	Medical Services .....	49
Animal Services .....	13	Nonprofit Organizations .....	49
Architecture, Interior Design & Landscape Design .....	15	Photography & Documentation .....	53
Alarms, Cameras & Security .....	17	Publications .....	53
Artists & Galleries .....	17	Real Estate .....	55
Audio, Video, Film & Media .....	19	Restaurants, Catering, Food & Event Planning .....	59
Automotive .....	23	Retail, Gifts & Apparel .....	61
Business Services & Consultants .....	23	Spa, Beauty & Barber Services .....	65
		Transportation .....	65
		COMPANY Index .....	66
		MEMBER Index .....	67





# TOPANGA ...

- An unincorporated community in western Los Angeles County, Topanga's natural splendor is singular among the series of canyons traversing the Santa Monica Mountains.
- Named for Topaa'nga, a Tongva word perhaps meaning "where the mountain meets the sea."
- Spanish explorers first wandered Topanga Creek before the U.S. was born.
- Elevation is 1,560' at Top of Topanga Overlook, descending to sea level at Topanga State Beach.
- Population: 8,781
- Median household income: \$138,400
- Median property value: \$1.4 million
- Median age: 46 years
- Home ownership rate: 76.3%

**CLIMATE** – Envied the world over: Mediterranean, with warm, sun-kissed days, cool evenings, and mild winters. Average annual rainfall is 19 inches. Dry summers are warm to hot. Every season feels like a dream vacation.

**BUSINESS** – Topanga is home to a vibrant and eclectic mix of businesses, from unique local boutiques nestled along winding roads to globally connected home-based ventures. Topanga's economy supports over 4,000 people, with key industries being health and wellness, social and professional services, and arts and entertainment. The highest-paid Topanga residents are in finance and public administration. Many are leaders in management, the creative arts, and education, contributing to the town's aspiring, yet whimsical character.

**TOPANGA CENTER** – Located along Topanga Canyon Boulevard, just 5 miles from the Pacific Ocean and 7 miles from the San Fernando Valley, Topanga Center includes Pine Tree Circle, The Courtyard, and the charming collection of shops and offices leading to Lower Fernwood and to Owl Falls at Jalan Jalan. And don't forget to explore the popular eateries, theaters, and entertainment venues further north, toward the iconic Flying Pig.

**EDUCATION** – Topanga youth are educated by Topanga Elementary Charter School and an array of private schools from pre-K through high school. Public middle and high schools are in neighboring areas with free busing available. The community is renowned for its pioneering and rich homeschooling network and resources, and extracurricular enrichment for all students.

- Preschools: Children's Corner, Topanga Montessori, The Love School.
- Topanga Elementary Charter (UTK-5, LAUSD)  
22075 Topanga School Road • [topangaelementary.org](http://topangaelementary.org) • 310.455.3711
- Manzanita School and Institute (Grades 4 - 12, Independent)  
1717 Old Topanga Canyon Rd. • 310.455.9700, Ext: 4
- DITCH School (Ages 11-18, Private, Alternative) • [ditchschool.org](http://ditchschool.org)
- Topanga is a reasonable commute from Santa Monica Community College, UCLA, Pepperdine University, Pierce Community College, and other institutions of higher learning.

**RECREATION** – Topanga State Park (13,000 acres) and Summit Valley Edmund D. Edelman Park (652 acres) feature miles of trails winding through gentle hills. These parks are perfect for hiking, mountain biking, and horseback riding. Children and adults love the playground and sports field at the Topanga Community Center.

Topanga Beach, with over a mile of stunning ocean frontage and 21.5 acres of scenic beauty, is one of the most popular surfing and tide pooling spots in the southland. Topanga Point is an exposed point break that has consistent surf all year round. The best wind direction is from the north. Waves here break over sea stones and reefs, so swimmers are advised to walk south for a sandy shore and a more relaxed beach experience.

Topanga Beach Surf Report • [beaches.lacounty.gov/topanga-beach](http://beaches.lacounty.gov/topanga-beach)

Topanga Beach Surf Cam • [hdontap.com/stream/565350/topanga-beach-surf-cam](http://hdontap.com/stream/565350/topanga-beach-surf-cam)

**HEALTH & WELLNESS** – Medical offices, bodyworkers, healers and health practitioners of every kind make a holistic approach to vitality abundantly available in Topanga. Major medical facilities are easily accessible nearby in Santa Monica, Malibu and Woodland Hills. Come to Topanga for therapy, yoga, pilates, acupuncture, nutrition, drumming, herbalism, and energy work, as well as advanced skin treatments, massage, and expert styling.

**SPIRITUAL LIFE** – Diverse spiritual communities flourish here, including Topanga Christian Fellowship, and Chabad of Topanga.

**SHOPPING & DINING** – No corporate chains here! Topanga's independently-owned shops and acclaimed eateries bring rave reviews and diversity to the community. These unique establishments offer personalized service and a curated selection of original, often handmade, items. Our indie shops and restaurants are gathering spots that foster our strong sense of community.

**ART & CULTURE** – Topanga's music, art and film legacies are legendary, and the creative scene is still unparalleled. Galleries, studios, concerts, recording artists, dancers, writers, actors and filmmakers thrive here in public performance spaces and hip venues. The Shelter's newly-opened archives enshrine the legacy of Woody Guthrie and Will Geer within Guthrie's historic home at Theatricum Botanicum.

**Topanga Library** (LA County) is a LEED-certified, Gold-rated green building offering books, music, computer access, educational services, a children's area with a dedicated storytelling space, and study rooms. • 310.455.3480 • 122 N Topanga Canyon Blvd  
[lacountylibrary.org/location/topanga-library](http://lacountylibrary.org/location/topanga-library)





Join the  
Topanga Chamber of Commerce

## LET'S SUPPORT ONE ANOTHER AND THRIVE TOGETHER

Promote your business in and outside  
of the Canyon with these premium  
member benefits:

### MONTHLY MIXERS

- Network with local movers, shakers, and dreamers at our Morning and Evening Mixers. Build those game-changing connections while sipping your favorite brew.
- Showcase your business at a Morning Mixer or host an Evening Mixer at your place.
- Win the monthly business card drawing and be featured on our Member Spotlight on our website and newsletter.
- Get heard and make waves: Join the conversation with county and state officials to shape policies that matter for Topanga's businesses, roads, and residents.

### GET THE WORD OUT

- Be discovered through a listing on our website, and in *DESTINATION: TOPANGA*. Shout out your events for free on *TopangaChamber.org* and get your news in front of the locals.

### SNAIL MAIL SUPERCHARGED

- Save big on postage with our exclusive Bulk Mail Permit—because every penny counts when you're a savvy marketer.

### KEEP TOPANGA GORGEOUS

- Channel your inner eco-activist with the Topanga Canyon Trash Warriors! Powered in part by Chamber members, these heroes are on a mission to keep Scenic Highway 27 pristine and beautiful. Hands-on!

### FLAUNT YOUR TOPANGA SPIRIT IN THE TOPANGA DAYS PARADE

- Ride or march with the Chamber crew in this zany and wonderful procession!

### PLUG INTO THE COMMUNITY

- Dive into the local scene by volunteering at Topanga Days and supporting other scintillating events. Work the Chamber booth, promote your business, and take the pulse of Topanga.

### GET TO KNOW US!

- *DESTINATION: TOPANGA* is brought to you with love by the Topanga Chamber of Commerce. Get to know our members on the following pages.



### READY TO JOIN?

Hit us up at *TopangaChamber.org*.  
Let's do this!

## CONNECT & CONTRIBUTE

### LOCAL ORGANIZATIONS AND ELECTED OFFICIALS

- Alcoholics Anonymous (TCC and Topanga Christian Fellowship) • *lacoaa.org*
- Topanga Actors Company • *topangaactorscompany.weebly.com*
- Topanga Association for a Scenic Community (TASC) • 310.455.2951
- Topanga Canyon Docents (TCD) • *topangacanyondocents.org*
- Topanga Canyon Trash Warriors • Find them on Facebook
- Topanga Chamber of Commerce • *topangachamber.org* • 310.560.4649
- Topanga Community Center (TCC) • *topangacommunitycenter.org* • 310.455.1980  
1440 N. Topanga Canyon Blvd
- Canyon Sages • *canyonsages.com*
- Topanga Youth Services • *tys.topangacommunitycenter.org*
- Topanga Cub Scout Pack 24 • *topangapack24.com*
- Topanga Historical Society • *topangahistoricalsociety.org*
- Friends of Topanga Library • *friendsoftopangalibrary@gmail.com*
- Topanga Peace Alliance • *info@topangapeacealliance.org* & on Facebook
- Topanga Symphony • *topangasympphony.org*
- Topanga Town Council • *topangatowncouncil.org* • 310.455.3001
- One Topanga • *onetopanga.com*
- Topanga Women's Circle • *topangawomenscircle.org*
- LA County Supervisor, Third District – Lindsey Horvath  
*lindseyhorvath.lacounty.gov*
- California State Assembly, District 42 – Jacqui Irwin • *a42.asmdc.org*
- California State Senate District 24 – Ben Allen • *senator.allen@senate.ca.gov*
- US 32nd Congressional District Rep – Brad Sherman • *sherman.house.gov*
- US Senator – Alex Padilla • 202.224.3553
- US Senator – Adam Schiff • 202.224.3841

I'm proud to support

### Destination: Topanga,

an important initiative by the Topanga Chamber of Commerce. Small businesses are the heart and soul of communities across LA County, and it's essential that we continue to uplift and invest in their success. This guide will serve as a lasting resource for Topanga's businesses, residents, and visitors alike, helping to ensure the vibrant spirit of this unique community continues to thrive.



LOS ANGELES COUNTY SUPERVISOR  
**LINDSEY**  
*Horvath*  
THIRD DISTRICT

West Valley/Mountain Communities  
Field Office  
26600 Agoura Road, Suite 100  
Calabasas, CA 91302  
(818) 880-9416







## STAY SAFE & HEALTHY IN TOPANGA CANYON

### DIAL 911 IN AN EMERGENCY:

Fire, Medical, Public Safety, Crime, Natural Disaster

### MEDICAL/DENTAL HELP

- Malibu Urgent Care • 23656 Pacific Coast Hwy, Malibu • 310.456.7551
- Exer Urgent Care • 23341 Mulholland Dr, Woodland Hills • 818.637.0048
- Topanga Medical Clinic: Dr. Douglas Roy  
395 S Topanga Canyon • 310.455.2019
- Providence Express Care – Virtual  
[providence.org/services/expresscare-virtual](http://providence.org/services/expresscare-virtual)
- Mulholland Dental Care 24-Hour Emergency Dentist  
[dentistwoodlandhills.net](http://dentistwoodlandhills.net) • 818.222.5566
- LA County Fire Station No. 69  
401 S Topanga Canyon Blvd.  
310.455.1766
- LA County Sheriff, Lost Hills Station  
27050 Agoura Rd, Calabasas  
818.878.1808  
In an emergency, dial 911 first!
- California Poison Control  
[calpoison.org](http://calpoison.org) • 1.800.222.1222



### PETS & WILDLIFE

- Animal Clinic of Topanga: 115 S Topanga Canyon Blvd., Ste. B,  
[animalclinetopanga.com](http://animalclinetopanga.com) • 310.455.1330
- 24-Hour Emergency Services: Western Veterinary Center  
4990 Reyes Adobe Rd, Agoura Hills • [wvcvet.com](http://wvcvet.com) • 805.881.7930
- Topanga Animal Rescue: Susan Clark & Ken Mazur  
[topangaanimalrescue.org](http://topangaanimalrescue.org) • 310.455.7268
- Agoura Animal Care Center (Animal Shelter)  
[animalcare.lacounty.gov](http://animalcare.lacounty.gov) • 818.991.0071
- Topanga Rattlesnake Wranglers, Catch & Relocate  
(Donations Appreciated)  
- Del Mar 310.455.1549  
- Dan McNeil 310.455.2234; 818.730.7379  
- Charlie Converse 310.455.3553  
- Victoria Payne 310.384.5763  
- Susan Clark 310.455.7268
- Please safeguard your pets from coyotes, and consider  
rattlesnake-aversion training for dogs.

### 'Fire season' is year-round. Please...

- Avoid smoking in nature, especially near vegetation.
- Don't tap ashes or toss cigarette butts from your car.
- No fires during Red Flag events, including barbecues,  
propane fires, candles; nor tools or equipment that  
could cause a spark.

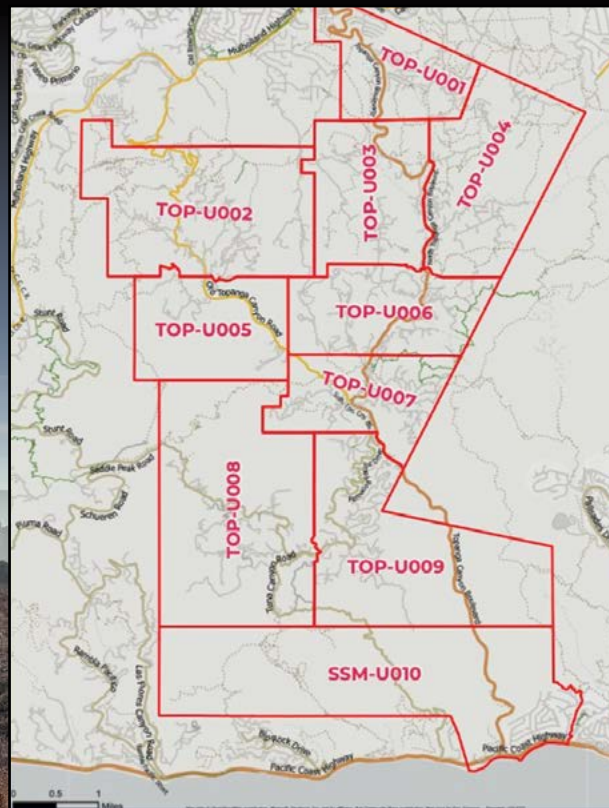
Together, we can preserve the beauty and safety  
of Topanga for everyone.

## GET INVOLVED WITH EMERGENCY PREPAREDNESS VOLUNTEER ORGANIZATIONS

- Arson Watch: Malibu-Lost Hills Sheriff's Station • [arsonwatch.com](http://arsonwatch.com)
- Topanga Coalition for Emergency Preparedness (TCEP)  
310.455.3000 • [tcep.org](http://tcep.org) • [@TCEP90290](https://twitter.com/TCEP90290)
- Topanga CERT (Community Emergency Response Team)  
Receive CERT training through [fire.lacounty.gov](http://fire.lacounty.gov) and [cityofcalabasas.com](http://cityofcalabasas.com)
- Topanga Canyon Fire Safe Council (TCFSC):  
For information and resources to "harden" your home and neighborhood against  
wind-driven wildfire visit [ntcfsc.org](http://ntcfsc.org)
- Become FireWise: [onetopanga.com](http://onetopanga.com)
- Topanga REACH (Relief, Emergency-Aid, & Community Help) [topangareach.org](http://topangareach.org)

## KNOW YOUR ZONE FOR EVACUATION ADVISORIES

- Find your zone at [TCEP.org](http://TCEP.org); [onetopanga.com](http://onetopanga.com); or [protect.genasys.com](http://protect.genasys.com)
- Residents: Obtain your Topanga Access Card at [topangatowncouncil.org](http://topangatowncouncil.org)
- Connect with your Neighborhood Network at [nn.tcep.org](http://nn.tcep.org)





## DURING A COMMUNITY EMERGENCY, STAY INFORMED WITH:

### Topanga Coalition for Emergency Preparedness (TCEP)

- 310.455.3000 • [tcep.org](http://tcep.org) • @TCEP90290
- TCEP posts real-time, verified updates to emergency incidents on [tcep.org/emergencystatus](http://tcep.org/emergencystatus) and social media @TCEP90290.

### Alert LA County

- [ready.lacounty.gov](http://ready.lacounty.gov)
- Sign up for Alert LA County to receive real-time evacuation information. Voicemail, text, and email alerts can be pushed via mobile phone and landline.

### Watch Duty

- Watch Duty mobile app alerts you of nearby wildfires and firefighting efforts in real-time.
- CalFire Incident Map: [fire.ca.gov/incidents](http://fire.ca.gov/incidents)

### Genasys Protect

- [protect.genasys.com](http://protect.genasys.com)
- Genasys Protect provides the community with critical evacuation updates by Zone. Monitor the Genasys Protect mobile app for evacuation and re-population notices.

### PulsePoint Respond

- PulsePoint Respond App
- [pulsepoint.org/download](http://pulsepoint.org/download)
- Pulsepoint alerts you to reports of fire starts and other emergencies based on reported 911 calls. To set up the app for brush fires in the Santa Monica Mountains, go to: [tcep.org/about-tcep-resources-SOCIAL-MEDIA/MOBILE-HOW-TO-GUIDES](http://tcep.org/about-tcep-resources-SOCIAL-MEDIA/MOBILE-HOW-TO-GUIDES)

### MyShake

- MyShake is a free app that provides earthquake early warning alerts for California, Oregon, and Washington.

### National Weather Service Los Angeles

- [forecast.weather.gov](http://forecast.weather.gov) • Topanga's zip code is 90290.
- @NWSLosAngeles

### LA County Sheriff – Lost Hills Station

- 818.878.1808 • @LHSLASD
- To receive Nixle Alerts (free, real-time emergency and safety notifications from public agencies) text your zip code to 888777.
- LA County Sheriff Department issues evacuation warnings and orders based on the Fire Department's disaster assessment; and coordinates road closures.

### Weather Underground

- Weather Underground mobile app provides hyper-local weather data.

### TopangaSAFE

- A WhatsApp Community helping Topanga residents stay informed about local safety and recovery events. A range of topic-specific subgroups (pets, water quality, Zone, etc.) aid relevancy.

During emergency incidents when the power is out, tune a battery-powered radio to AM station KNX 1070. TCEP strives to transmit updates at the top of each hour on FRS radio channel 15. Communicate with your Neighborhood Network using your neighborhood's assigned FRS radio channel which can be found at <https://bit.ly/TCEPFRSCHANNELS>.



## COMMUNITY EVENTS CALENDAR

### ANNUAL

#### MARCH

- Topanga Youth Services Annual Spring Musical (TCC)

#### April

- Annual Egg Hunt (TCC)
- Topanga Elementary Charter School Variety Show

#### MAY

- Topanga Days Festival (TCC)
- Topanga Days/Memorial Day Parade
- Topanga Banjo Fiddle Contest Folk Festival – Paramount Ranch
- Butterfly Day at the Mountain Mermaid (Check date at [butterflyday.org](http://butterflyday.org))

#### JUNE

- Will Geer Theatricum Botanicum Repertory Season June – October

#### JULY

- Reggae on the Mountain - TCC

#### AUGUST

- Theatricum Botanicum's Annual Gala

#### SEPTEMBER

- Heal the Bay Coastal Clean-Up Day

#### OCTOBER

- Open Studios of Topanga
- Great California Shake Out Annual Drill at TCC
- Topanga Elementary Charter School Halloween Carnival (TCC)

#### NOVEMBER

- Topanga Film Festival
- Topanga Chili Cookoff & Swap Meet (TCC)

#### DECEMBER

- Family Holiday Party & Skate Night (TCC)
- Holiday Family Faire – Will Geer Theatricum Botanicum
- Snow Night – Pine Tree Circle

### SEASONAL & MONTHLY


- Food Truck Fridays (TCC)
- Second Saturdays – Live Music at Topanga Center
- Smarty Pants Storytime – Topanga Library
- Square Dance with Live Music – TCC
- Topanga Threads – fiber-arts meet-up, Topanga Library
- Wheel of the Year Celebrations - Witch House Topanga

### WEEKLY

- Sunday Morning Guided Walks & Nature Center (TCD) – Trippet Ranch, Topanga State Park
- Topanga Canyon Trash Warriors – Sundays, 7 am at the Post Office, 101 S. Topanga Canyon Blvd.
- Topanga Farmers Market (TCC) Fridays, 9 – 1, 1440 N. Topanga Canyon Blvd.

More at [onetopanga.com](http://onetopanga.com) Community Calendar.



*Rosewood*

ART | TECHNOLOGY | CULTURE

Inquiries about office space & rentals: (310) 428-1581  
1111 N TOPANGA CANYON BLVD rosewoodintopanga.com

## ACCOMMODATIONS, EVENT LOCATIONS, STUDIOS

### ■ The 1909

Weddings, Corporate and Social Events

Amir Milani

424.235.0006

1909 Topanga Cyn Blvd • The1909.com

### ■ The Mountain Mermaid

Historic Site for Events, Filming & Lodging

Bill Buerge

310.403.4543

20421 Callon Dr • themountainmermaid.com

### ■ Rosewood

Studios for Rent

Janek Dombrowa

310.428.1581

1111 N Topanga Cyn Blvd • rosewoodintopanga.com

### ■ Topanga Community Center

Event Venue & Film Location

Dayna Miller

310.455.1980

1440 N Topanga Cyn Blvd • topangacommunitycenter.org

### ■ Topanga Dreaming

A Destination for New Dreams

Deb Rivera

310.502.6421

topangadreaming.com

## ANIMAL SERVICES

### ■ Canyon View Ranch for Dogs

Board, Train & Daycare

Randy Neece

310.455.7897

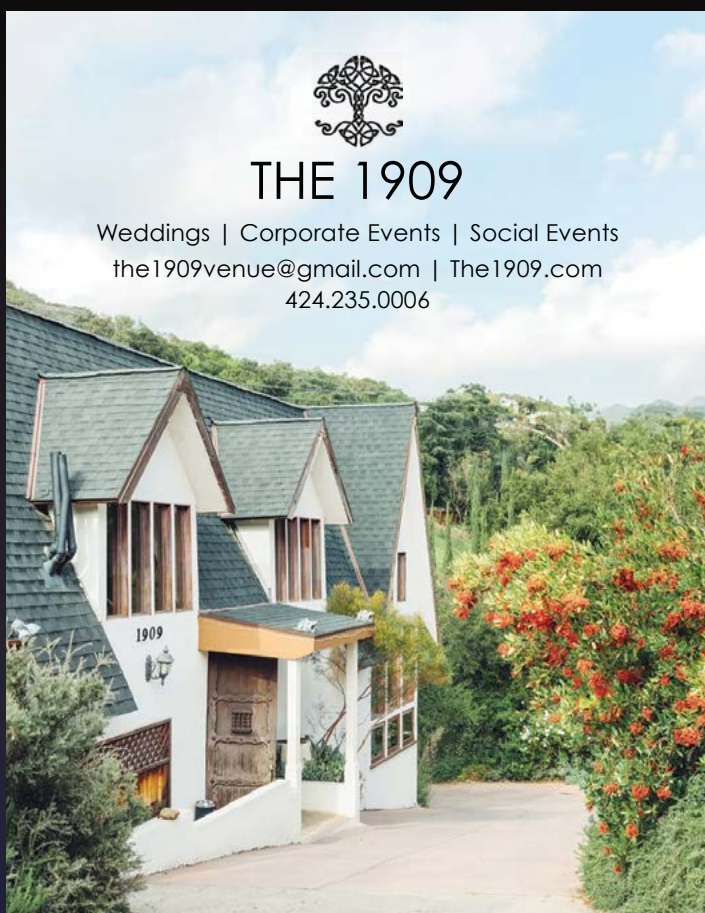
1558 Will Geer Rd • canyonviewranch.com


### ■ Fair Hills Farms

Horse Ranch in Bucolic Topanga Canyon

818.347.5049

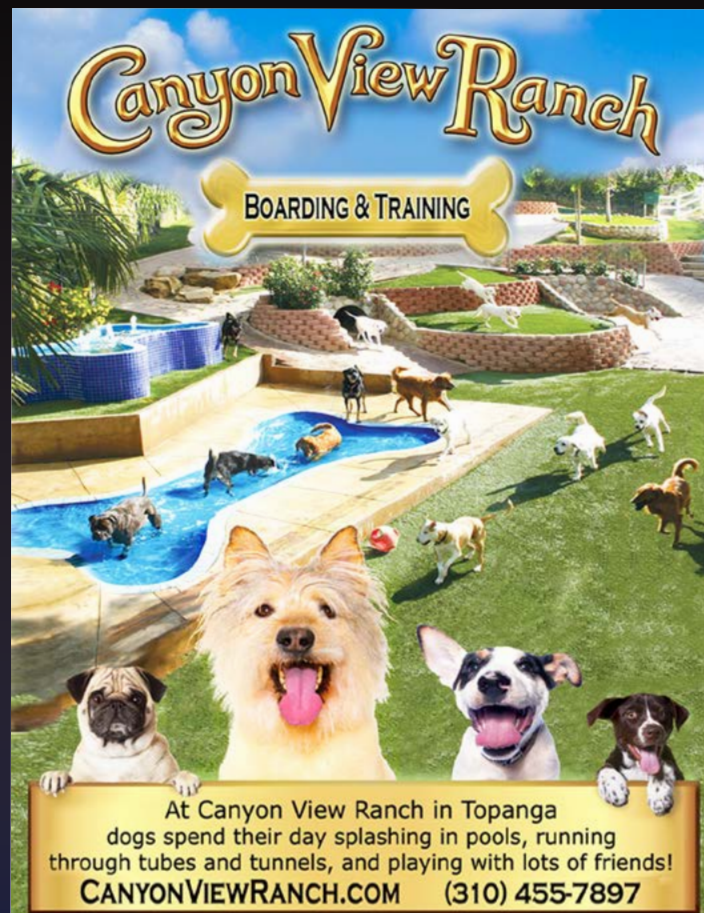
fairhillsfarms.com





**THE 1909**

Weddings | Corporate Events | Social Events  
the1909venue@gmail.com | The1909.com  
424.235.0006



**Canyon View Ranch**

BOARDING & TRAINING

At Canyon View Ranch in Topanga  
dogs spend their day splashing in pools, running  
through tubes and tunnels, and playing with lots of friends!  
**CANYONVIEWRANCH.COM (310) 455-7897**





**CATHERINE S. GRASSO**

Interior Design  
*Associated ASID, IDS*

**310 710 7673**

catherine@designforliving.me  
www.designforliving.me

DESIGN  
FOR  
LIVING



*Fair Hills Farms*

*A Private Boarding Facility offering Polo and Riding Lessons*

*Call 818 347 5049 for tours or membership details*

*2735 Santa Maria Road, Topanga CA*

#### ANIMAL SERVICES, CONTINUED

##### ■ Topanga Animal Rescue

*First Responders for Animals in Emergency Situations*

topangaanimalrescue.org

310.455.7268

##### ■ Old Canyon Stables

*Working Stables: Boarding, Lessons, Experiences, Gifts*

Trudy Perry

310.776.0949

oldcanyonstables.com

##### ■ Your Body Solutions

*Massage, Bodywork, CranioSacral, and Energy Work for Pets*

Carlo Petrini

310.430.3268

yourbodysolutions.com

#### ARCHITECTURE, INTERIOR DESIGN & LANDSCAPE DESIGN

##### ■ Artemis Studio LA

*Full Service Interior Design Studio, Shop & Gallery*

Elizabeth Flynn

213.284.8738

120 N Topanga Cyn Blvd, Unit 109 • artemisstudiola.com

##### ■ Design for Living

*Interior Design & Decoration*

Catherine Grasso

310.710.7673

designforliving.me

##### ■ Design Integration Group (DIG) / Malibu Solar Services

*Ecological Design & Construction*

Kevin Parkhurst, LEED AP, and Hannah Wear

310.455.0995

127 S Topanga Cyn Blvd • digservices.com

##### ■ JTD Architects

*Design Philosophy: Simplicity & Resilience*

Janek Dombrowa

310.842.7616

1111 N Topanga Cyn Blvd, Suite A • jtdarchitects.com

## DESIGN PHILOSOPHY: SIMPLICITY & RESILIENCE



**BUILDING BACK.  
STRONGER. SAFER. BETTER.**

c: 310.842.7616 urs@jtdarchitects.com

**jtd**  
architects  
TOPANGA CA

**Get Involved!**  
and feel good for having made  
a difference.



topanga  
animalrescue.org  
a 501c3 non profit corporation

donate  
volunteer

310 455 SCOT(7268)





## ARCHITECTURE, INTERIOR DESIGN &amp; LANDSCAPE DESIGN, CONTINUED

## ■ Lizanne Judge Design

Interior Design, Interior Architecture

Lizanne Judge

310.704.3014

101 S Topanga Cyn Blvd, Suite 668

lizanne@lizannejudgedesign.com • lizannejudgedesign.com

## ■ Sholty Construction and Design Associates

Custom Remodeling &amp; New Construction

Jim Sholty

310.497.6243

sholty.constructionanddesign@gmail.com.

## ■ The Sterling-Watson Collective LLC

Architectural &amp; Engineering Design Firm

Darren Watson

424.341.3238

Darren@Sterling-Watson.com • theswcollective.com

## ■ Topanga Architecture &amp; Design

Finest Architecture, Planning, Interior Design

Geoff Sheldon, Roxane Berger

310.455.2865

topangaarchitecture.com

## ALARMS, CAMERAS &amp; SECURITY

## ■ Malibu Patrol / Gates Security

Security Systems, Patrol &amp; Response

Scott Wagenseller

805.499.6555

gatessecurity.com

## ARTISTS &amp; GALLERIES

## ■ Artemis Studio LA

Full Service Interior Design Studio, Shop &amp; Gallery

Elizabeth Flynn

213.284.8738

120 N Topanga Cyn Blvd, Unit 109 • artemisstudiola.com

## ■ Chris Conway

Artist, Writer, Consultant

Chris Conway

805.680.8185



Topanga Architecture &amp; Design Inc.

## Sustainable &amp; Artistic Architecture &amp; Interior Design

TopangaArchitecture.com

TopangaArchitect@gmail.com

(310) 455-2865

DESIGN  
INTEGRATION  
GROUP, Inc.127 S. Topanga Cyn Blvd  
Topanga, CA 90290

phone: 310-455-0995

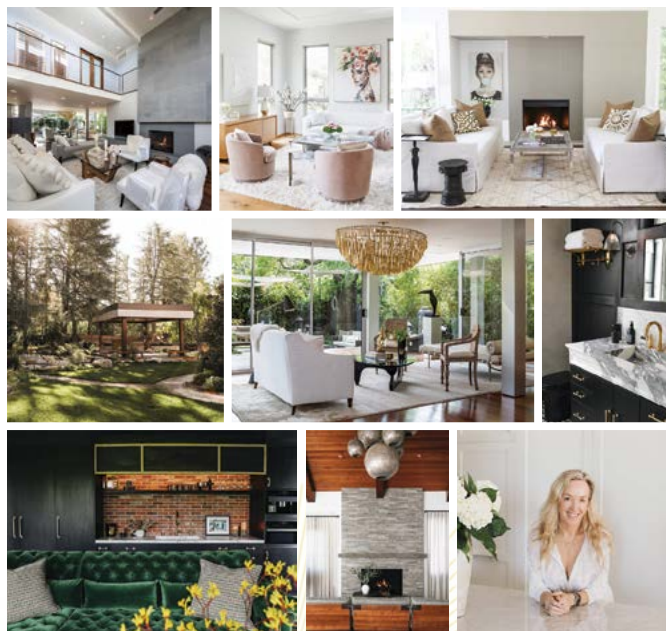
e-mail: info@digservices.com

Environmental Planning  
Ecological Design  
Permit Processing  
& Green Construction

DIG's mission is to foster and cultivate collaborative relationships and engage in projects that integrate concerns for social & environmental issues architecture & built form creativity & culture.

- o master planning, design, drafting, permits
- o integrate buildings, landscape & context
- o structure resiliency and preparedness for wildfires, flooding & grid power outages
- o natural daylighting, passive solar strategies
- o specify environmentally responsible materials, technologies & systems
- o optimize appropriate mechanical & site energy system alternatives
- o solar heating for pool & domestic water
- o low water, edible & native landscapes
- o on site water conservation, catchment, retention & use, gray water systems
- o advanced waste water treatment systems, solar aquatic systems, constructed wetlands

## FROM CONCEPT TO COMMISSIONING



## - SHE GETS US -

The Results Are Magic

Lizanne Judge Design

Interior design. Interior architecture. Landscapes.

310.704.3014 | LizanneJudgeDesign.com






# Tommy Tucker Time

Artist. Vintage Signs,  
Mural Paintings, Set Design

Thomas Domino

vintagesignartistlasvegas.com



*David Carbo*

@David\_Carbo\_Art

E: DavidCarbo24@icloud.com

Ph: 1(310)266-1188

facebook.com/DavidCarboArt

website: *DavidCarbo—Art.com*

\*Art available at Café Mimosa



WITCH HOUSE TOPANGA

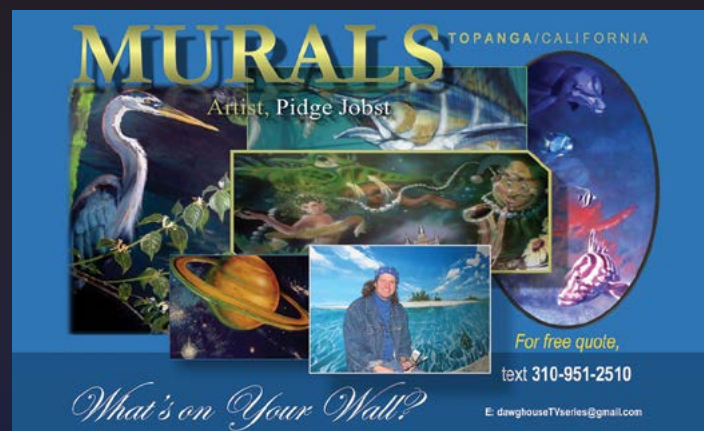
137 S. TCB 90290 @WITCHHOUSETOPANGA

## ARTISTS &amp; GALLERIES, CONTINUED

- **CPM JONES Studio**  
Fine Art Memorials  
cpmjones.com 310.430.4241
- **David Carbo, Artist, Painter**  
Eva Annika Lundgren Carbo  
davidcarbo-art.com 310.266.1188
- **Marlene Frantz, Multi-Media Artist**  
Marlene Frantz  
marlenefrantz.com 310.455.2298
- **Mervat Elias, Ceramic Artist**  
Mervat Elias  
Google Mervat Elias 559.586.1082
- **Saddle Peak Art Farm**  
Design, Style & Creation  
Andrew & Patricia Rasmusen  
saddlepeakartfarm.com 310.490.2367
- **Tommy Tucker Time**  
Artist. Vintage Signs, Mural Paintings, Set Design  
Thomas Domino  
vintagesignartistlasvegas.com 818.489.5233
- **Topanga Architecture & Design**  
Finest Architecture, Planning, Interior Design  
Geoff Sheldon, Roxane Berger  
topangaarchitecture.com 310.455.2865
- **Topanga Art Tile & Design**  
Handmade Art Tiles, Murals and Mosaics  
—Design, Produce and Install  
Matt Doolin, Paul Doolin 310.455.3359, 310.403.7706  
115 S Topanga Cyn Blvd, Suite 137 • topangaarttile.com
- **Topanga Muralist**  
Artist, Author, Screenwriter  
Pidge Jobst  
dawghousevseries@gmail.com
- **Witch House Topanga**  
Private Manor, Arts, Education & Event Space  
Tiberon Trambly, Sean FayeCullen  
137 S Topanga Cyn Blvd • @witchhousetopanga 310.384.4305

## AUDIO, VIDEO, FILM &amp; MEDIA

- **BAKADA Productions**  
Grammy Nominated Violinist: Concerts, Film Scores  
Tony Selvage 808.987.0952, 310.455.1157  
tonyselvage.com
- **Hanna Elias**  
Filmmaker  
Hanna Elias 559.586.1082
- **Home Productions US**  
Production Services in USA and Brazil  
Robyn Bensinger 310.713.5550  
home.tv.br



**MURALS** TOPANGA/CALIFORNIA

Artist, Pidge Jobst

For free quote,  
text 310-951-2510

*What's on Your Wall?*

E: dawghouseTVseries@gmail.com





## AUDIO, VIDEO, FILM &amp; MEDIA, CONTINUED

■ **Joseph Rosendo Presents, Inc.**

Television &amp; Video Production and Consulting

Joseph Rosendo

Topanga Chamber of Commerce Past President

josephrosendo.com

310.455.7164

■ **Menlo Scientific Acoustics, Inc.**

Acoustic Design

Neil Shaw

menlozone.com

310.455.2221

■ **The Mountain Mermaid**

Location Rental

Bill Buerge

20421 Callon Dr • themountainmermaid.com

310.403.4543

■ **SUPERSOLUTIONARY.COM**

Upgrade US Politics, Solve Problems, Rebuild Communities

Scott Vineberg

supersolutionary.com

310.279.8163

■ **TheoFilms**

Independent Production Company of International

Artists and Scientists

Ela Roth Capone

425.286.3695

■ **Topanga Film Festival & Institute**

Celebrating Two Decades of Art, Story &amp; Creative Evolution

Urs Baur, Adam Roberts

1111 N Topanga Cyn Blvd • topangafilmmfestival.org

■ **Wes Mathur Media**

Drone Videographer, Broadcast &amp; Media Production

Wes Mathur

wesmathur.com

■ **Westside Video Service**

Transfer Your Memories Before It's Too Late

Sam Najah

westsidevideoservice.com

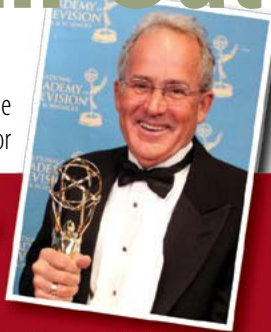
424.255.8994

JOSEPH ROSENDO

*Presents***Steppin' Out**

Six-Time

Emmy award-winning Director



We'll create your business  
videos *or* help you create  
your own television show.  
Budget development, distribution, pilot  
production, scripting, directing and more!

P. O. Box 1541 | Topanga, CA 90290  
tv@josephrosendo.com | 310.455.7164

JosephRosendo.com

~ instagram @josephrosendopresents ~

~ Amazon.com Search Joseph Rosendo ~

~ @Joseph Rosendo ~



**20<sup>TH</sup> TOPANGA FILM FESTIVAL**  
NOVEMBER 6-9 2025



20 YEARS OF CINEMA FOR CHANGE  
**topangafilmmfestival.org**

**WES MATHUR MEDIA****DRONE VIDEO AND PHOTOGRAPHY**

wesmathur@gmail.com - wesmathur.com

**Events - Real Estate****Cinematic - Commercial****Tourism**





## ARCHIVE YOUR MEMORIES BEFORE IT'S TOO LATE!



## WE TRANSFER ALL FORMATS

(VIDEOTAPE, PHOTO, FILM, AND MORE)

- LOCATED IN TOPANGA -
- PRICE MATCH GUARANTEE -



**SUPPORT LOCAL**  
**424-255-8994**  
WESTSIDEVIDEOSERVICE.COM



**WILDWOOD**

Est. 1979

## COMMUNITY CONNECTED

Wildwood is proud to support Topanga Canyon's local artisans & business owners. Let's collab!

436 S Topanga Canyon Blvd, Topanga, CA 90290  
310 299 7000

IG: Topanga\_Wildwood



## AUTOMOTIVE

### ■ Saar Shani Towing

We're Available 24/7!

Saar Shani

saarshanitowing.com

888.838.3570

## BUSINESS SERVICES & CONSULTANTS

### ■ Canyon Car Service

Boutique, Full Service Team, Airport Runs & Everywhere Else

Jenise Blanc Chance

canyoncarservice.com

310.456.4284

### ■ Chris Conway

Artist, Writer, Consultant

Chris Conway

805.680.8185

### ■ Crescent Consulting

Management Consulting Services

Shireesh Joshi

crescentconsultinginc.com

818.640.9442

### ■ Dunn Pellier Media

Health & Wellness Public Relations

Nicole Dunn

dunnpelliermedia.com

844.WELLPR1, 844.935.5771

### ■ Faces of the Future

Marketing & Business Coaching & Consulting for Solopreneurs

Clifton Smith & Victoria Petrovsky

contact@facesofthefuture.io • facesofthefuture.io

424.279.4789

### ■ HVAC Consulting Solutions, Inc.

Amazing HVAC Quality and Indoor Comfort

Craig Lawrence Scher

23710 Vanowen St, Suites A and B, West Hills

wecoolyouoff.com

(833) 90290-AC

## PRODUCTION SERVICES FOR USA AND BRAZIL



Robyn

Bensinger+ team

310 . 713 . 5550

robyn@home.tv.br

## Crescent Consulting Inc

Management Consulting Services

**818.640.9442**

**Shireesh Joshi**

[sjoshi@crescentconsultinginc.com](mailto:sjoshi@crescentconsultinginc.com)

[www.crescentconsultinginc.com](http://www.crescentconsultinginc.com)





**CALICAMP**  
EST. 1955  
**June 16 - August 8**  
**(310) 455-0404**  
[www.calicamp.com](http://www.calicamp.com)

## BUSINESS SERVICES &amp; CONSULTANTS, CONTINUED

- **Malibu Patrol / Gates Security**  
Security Systems, Patrol & Response  
Scott Wagenseller  
gatessecurity.com 805.499.6555
- **Heather Bryant**  
Freelance Bookkeeper, Administrative Assistant  
Heather Bryant 818.795.5042  
hbtvproduction@yahoo.com
- **Sonny Boy Studios**  
Branding, Logo Design, and Fine Art  
Robert Novak  
sonnyboystudios@mac.com
- **SUPERSOLUTIONARY.COM**  
Upgrade US Politics, Solve Problems, Rebuild Communities  
Scott Vineberg 310.279.8163  
supersolutionary.com
- **Writer for Hire**  
Ghostwriter, Editor, Content, Marketing & Business Plans  
Diana Mathur, MBA 310.266.3816  
dianamathur.com

## CAMPS, SCHOOLS &amp; CHILDREN'S INSTRUCTION

- **Cali-Camp at Big Rock Ranch**  
A Place for Laughter, Growth & Adventure  
Ariel Abt 310.455.0404  
1717 Old Topanga Cyn Rd • calicamp.com
- **Camp Wildwood**  
Proud to Support Topanga Canyon Businesses & Artisans  
Eric DeLeon, Joshua Kelfer 816.812.3333  
Ericdeleon197391@gmail.com, josh.kelfer@republicinvestments.com  
500 S Topanga Cyn Blvd
- **Dae-Myung Martial Arts Academy**  
Taekwondo Classes for Children & Adults Year-Round  
Edison Park 310.774.1855  
vikinglance@yahoo.com
- **DITCH School**  
Unschooling + Early College = Time to be You  
Jessica Jacobs 310.456.4547 (texts only please)  
info@ditchschool.org • ditchschool.org
- **Loving Hands Children's Home**  
Nurturing the Holistic Development of Vulnerable Children  
Janiese Finney 424.781.8194  
lovinghandschildrenshome.org
- **Manzanita School & Institute**  
Forest Kindergarten School through 12th Grade  
Paul Astin, Ph.D., Founder & Head of School 310.455.9700 Ext. 4  
Eva Sanchez-Calixtro, Director of Admissions  
1717 Old Topanga Cyn Rd • manzanitaschool.org

**EDUCATION**  
**REVOLUTION**  
Guiding learners 11-18 to University & Career  
through UNSCHOOLING & EARLY COLLEGE

learn on your own terms  
co-working cohort  
world changing opportunities  
choice college courses  
internships or jobs  
purpose projects  
activism and more

**DITCH SCHOOL**

**TOPANGA HANGOUT**  
**MENTOR SUPPORTED**  
**IN-PERSON & REMOTE**

[www.ditchschool.org](http://www.ditchschool.org)  
[info@ditchschool.org](mailto:info@ditchschool.org)

"Dare to Innovate and Transcend Cultural Hegemony"

**Writer**  
**For**  
**Hire**

**Diana Mathur**  
(310) 266 - 3816  
dianamathur@gmail.com





Offering the best in alternative education since 2001.

**GRADES 6-8**



**TOPANGA MOUNTAIN  
SCHOOL**

*knowledge naturally.*



**TOPANGAMOUNTAINSCHOOL.ORG**

#### CAMPS, SCHOOLS & CHILDREN'S INSTRUCTION, CONTINUED

##### ■ Pilates in Topanga (Integration Studios)

*Private & Semi-Private Sessions*

Jocelyn Berry 818.606.9356  
120 S Topanga Cyn Blvd, Suite 208 • pilatesintopanga.com

##### ■ Randy Chance Music School

*Teaches Guitar, Bass, Keyboard and Piano. All Levels.*

Randy Chance 310.455.8984  
randychance.com

##### ■ Topanga Mountain School

*A Unique Middle School*

Joy Taylor 818.346.8355  
5920 Shoup Ave, Woodland Hills • topangamountainschool.org

##### ■ Will Geer Theatricum Botanicum

*Idyllic Open-Air Theatre, Repertory Season*

*School Groups & Drama Camp*

Ellen Geer 310.455.3723, 310.455.2322  
1419 N Topanga Cyn Blvd • theatricum.com

##### ■ Witch House Topanga

*Private Manor, Arts, Education & Event Space*

Tiberon Trambly, Sean FayeCullen

137 S Topanga Cyn Blvd • @witchhousetopanga 310.384.4305

#### COACHING, COUNSELING & RETREATS

##### ■ Faces of the Future

*Marketing & Business Coaching & Consulting for Solopreneurs*

Clifton Smith, Victoria Petrovsky 424.279.4789  
contact@facesofthefuture.io  
facesofthefuture.io

##### ■ The Femininity Project

*Sacred Archetypes Card Readings by Donation*

Mary Guillermin, LMFT #52868 424.436.7318  
@loveafterdeath\_soloshows

## MANZANITA SCHOOL

A LIVING EDUCATION AT BIG ROCK



### FALL 2025-26 ENROLLMENT STILL OPEN!

Manzanita is a fully-accredited Kinder-12th grade program, with a 4:1 student-to-adult ratio, 100% college attendance, and a pristine outdoor campus

STILL ACCEPTING APPLICATIONS, CALL TO SCHEDULE A TOUR

310.455.9700 • eva@manzanaschool.org

**MANZANITASCHOOL.ORG**



### Topanga DAE-MYUNG MARTIAL ARTS ACADEMY

**Grand Master Edison Park**

7th Dan Black Belt Tae Kwon Do

6th Dan Black Belt Judo

5th Dan Black Belt Hap Ki Do

**(310) 774-1855**

**vikinglance@yahoo.com**

Classes for children and adults offered year-round.

Proudly Serving Topanga Since 2004

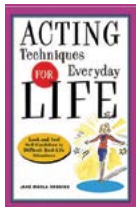


Harmonizing Mind, Body and Spirit





## ACTING TECHNIQUES FOR EVERYDAY LIFE:



To look and feel self-confident in difficult, real-life situations, job interviews, public speaking, difficult people, any situation you think could be more fun, but isn't. With **JANE MARLA ROBBINS:** actress, performance coach, author of the award-winning *Acting Techniques for Business, Personal and Social Success*. Workshops and private sessions.



janemarlarobbins.com | janemarlarobbins@gmail.com | 310.455.1579

**Dianne Porchia, MA, DMBM**  
Spiritual Therapist  
HEAL Documentary

**Porchia's WISH**  
Whole Integrated Self Health

**Life In Balance**  
MIND BODY HEART SOUL  
Mind-Body Medicine  
Stress Reduction - Immune Support  
Heart-Soul Communication Skills

01.310-455-2851  
porchiaswish.com  
Dianne@porchiaswish.com

**GREEN RODENT RESTORATION™**

Your Friendly Eco-Rodent Experts.

**YOU'VE GOT A RAT PROBLEM**  
**WE'VE GOT THE SOLUTION!**

Rodent Proofing  
Attic & Crawl Space Cleaning  
Insulation Replacement  
Recurring Rodent Maintenance Program

**747.998.2396** [www.GreenRodentRestoration.com](http://www.GreenRodentRestoration.com)

## COACHING, COUNSELING & RETREATS, CONTINUED

- Jane Marla Robbins**  
Coach, Author, Actor  
Jane Marla Robbins  
janemarlarobbins.com 310.455.1579
- Porchia's WISH - Whole Integrated Self Health**  
Mind-Body Medicine, Spiritual Therapist  
Featured in HEAL Documentary  
Dianne Porchia, MA, DMBM 310.455.2851  
Topanga Chamber of Commerce Past President  
porchiaswish.com
- Tarrant Psychotherapy**  
Relational, Somatic, Creative Psychotherapy and Coaching  
Alexander Tarrant 310.800.1702  
540 S Topanga Cyn Blvd • alexandertarrant.com
- We All Feel**  
Online and In-Person Support Groups  
Amanda Sacks, LCSW 201.788.6632  
weallfeel.com

## CONTRACTORS & HANDYWORKERS

- Absolute Best Electric**  
Affordable, Professional Electrician in Calabasas  
Jim Allen 818.225.1314  
absolutebestelectric.com
- Archetype Structures, Inc.**  
Design, Build, Consulting, Brokerage, Fix It  
John Bertolli, General Contractor 310.455.0300, 310.291.8884  
archetypestructures.com
- Curtis Caddell**  
Fire Hardening  
Curtis Caddell 310.579.5754  
curtiscaddell1946@gmail.com
- Green Rodent Restoration**  
Fire, Smoke, Odor, Rodent Damage Restoration  
Lisa Alexandrian 747.998.2396  
lisa@greenrodentrestoration.com
- HVAC Consulting Solutions, Inc.**  
Amazing HVAC Quality and Indoor Comfort  
Craig Lawrence Scher (833) 90290-AC  
23710 Vanowen St, Suites A and B, West Hills • wecoolyouoff.com
- Pacific Coast Heating & Air**  
24/7 Heating and Air Conditioning Repair  
Joe G 818.888.3968  
pacificcoastheatingandair.com
- Sholty Construction and Design Associates**  
Custom Remodeling & New Construction  
Jim Sholty 310.497.6243  
sholty.constructionanddesign@gmail.com

## Sholty Construction and Design Assoc.

Custom Remodeling & New Construction

**310.497.6243**

sholty.constructionanddesign@gmail.com

P.O. Box 606, Topanga, CA 90290

Serving Topanga since 1990

Lic. 599137





## CONTRACTORS &amp; HANDYWORKERS, CONTINUED

■ **The Sterling-Watson Collective LLC**

Architectural &amp; Engineering Design Firm

Darren Watson

424.341.3238

Darren@Sterling-Watson.com • theswcollective.com

■ **ENTERTAINMENT, THEATER, DANCE & MUSIC**■ **Ballet for Topanga***The Ballet Studio in the Canyon!*

Sherry Jason

310.455.3939

topangaballet.com

■ **BAKADA Productions***Grammy-Nominated Violinist: Concerts, Film Scores*

Tony Selvage

808.987.0952, 310.455.1157

tonyselvage.com

■ **Corazón Culture & Arts Resource Center***The Heartbeat of Topanga*

Giovanna Brandi

310.795.1373

corazontopanga.com

■ **Ethos Film Awards***Showcases Films Promoting Peace, Diversity, Inclusion, and Environmental Sustainability*

Anabelle Munro

310.699.4303

■ **Get Started Playing Ukulele***Finding Daily On-Line Joy Through Ukulele*

Melanie Papish

310.403.3159

*Topanga Chamber of Commerce Past President*  
getstartedplayingukulele.com■ **JG Crawford Music***Rocking Rhythm and Blues*

Jim Crawford, Jenny Leimbrook

818.917.5714

jgcrawfordmusic.com

**Sean M. O'Hara**

Operation Manager

818.838.4400

12685 Foothill Blvd. Sylmar, CA 91342

seano@expopropane.com

www.expopropane.com

**RANDY CHANCE**  
**MUSIC LESSONS &**  
**SONG WRITING CLASSES****Guitar, Bass,**  
**Keyboard****310-455-8984**

randychance.com



The Sterling-Watson Collective

**STERLING-WATSON**  
**"HOUSE TO HOME"****SERVICES WE OFFER :**ADUs, Remodels,  
& Extensions

Construction

Structural &  
Architectural Design

Get to know us:

[theswcollective.com](http://theswcollective.com)

Email Us:

[darren@sterling-watson.com](mailto:darren@sterling-watson.com)*Ballet*

FOR TOPANGA

**is pleased to announce our Schedule of Classes!**

Children Ages 4-6 — Mondays from 4-4:45 pm

Open Level Adults — Thursdays from 6:30 -8 pm

The Ladies' Class — Fridays from 10 - 11:15 am

**THE BALLET STUDIO IN THE CANYON!**

- Established in 1979, celebrating 46 years!
- Classical Ballet training in a warm, nurturing, and supportive environment.
- Classes for all ages, genders, levels and bodies.
- Private coaching available.

For more information, please visit [www.topangaballet.com](http://www.topangaballet.com)

or contact Sherry Jason at 310.455.3939

or email: [sherryjason.ballet@gmail.com](mailto:sherryjason.ballet@gmail.com)



# 27 Things to Do on Scenic Route 27

- 1 Visit **Owl Falls** at **Jalan Jalan Imports** and **Topanga Rocks**, home to towering Buddhas, fine Indonesian statuary, and magnificent crystals. Choose a talisman, or leave a prayer by the hillside Balinese Temple.
- 2 Savor a cappuccino and a delicious bite to eat at **Café Mimosa**, where French café charm draws in the Canyon creatives. Browse books by local authors. Leave with a handcrafted souvenir, or a line of dialogue.
- 3 Toast milestones at **The 1909**. Say “I do” in the meadow or supercharge your corporate summit with sweeping Canyon views from the ceremony deck.
- 4 Pamper yourself at **Sienna Skin Care**, Topanga’s go-to for rejuvenating facials, aesthetic and wellness services since 1995. Teens, adults, and several famous faces trust Sally and her expert team to work their magic. Get red-carpet ready or just a little self-care.
- 5 Call ahead for a table at **Café on 27**, where foodies flock for hillside dining above the creek—perfect for enjoying Lobster Benedict, sipping a Raspberry Lavender, and taking in the canyon views. Dog friendly.
- 6 Let the kids explore the playground at **Topanga Community Center**. Fill your basket at the Friday **Farmers Market**, sup at **Food Truck Fridays**, or dive into Canyon festivals like **Topanga Days**, **Reggae on the Mountain**, and the **Chili Cook-Off & Swap Meet**.
- 7 Picnic under the oaks at **Will Geer’s Theatricum Botanicum** for open-air Shakespeare and summer magic.
- 8 Romance creek-side at **Inn of the Seventh Ray**—serving conscious cuisine and fine wines.
- 9 Round up your posse and tool a leather belt at **Topanga Creek Outpost**.
- 10 Hike or bike **Topanga State Park**. Join a Sunday guided walk with a **Topanga Canyon Docent**. Trek the **Backbone Trail**. Search for fossils in **Red Rock Canyon**.
- 11 Immerse yourself in books, art, and community spirit at **Topanga Library**. Expand your thinking with the **Manzanita Speaker Series**.
- 12 Explore Topanga’s Main Street and browse boho-chic boutiques like **Pebbles**, **Moona Star**, **Alkemie Road**, **Be Love**, and **Topanga Homegrown**.
- 13 Grab a fresh sandwich at **Water Lily Café**, then top it all off with organic soft-serve from **Canyon Gourmet**.
- 14 Go retro at **Hidden Treasures Vintage**, THE most exquisitely curated vintage clothing shop in LA.
- 15 Snap a selfie by the surfboards outside **Busto & Sun**, then head in for a custom hat. Pour your own candle at **Topanga Mercantile**.
- 16 Catch live music at Topanga Center on **Second Saturdays**.
- 17 Dance, drum, sketch, and connect with creativity at **Corazón Culture & Arts Center**.
- 18 Chill with wood-fired pizza and a cocktail at **Endless Color**, and flip through all that groovy vinyl.
- 19 Experience Topanga’s healing vortex—stretch at **Pilates MD** or **Pilates in Topanga**, rebalance at **Topanga Acupuncture Bodywork Chiropractic**. Book a session at **Porchia’s WISH** or train at **Your Body Solutions**. Worship at **Topanga Christian Fellowship**. Peruse this Directory for a spectrum of therapists, energy healers, spiritual guides, and home-based wellness practitioners.
- 20 Pick up a free copy of **Topanga New Times** and dive into the stories, culture, and characters that define life in the Santa Monica Mountains.
- 21 Board the **Beach Bus**. Catch a wave at **Topanga State Beach**.
- 22 **Get Started Playing Ukulele**, an on-line social scene with long-time Topangan Melanie Kareem. Dance for joy and fitness with **Ballet for Topanga**.
- 23 Mingle on the terrace at **Froggy’s**, portal to the **Topanga Film Festival**.
- 24 Find equine healing or a riding lesson at **Old Canyon Stables**. Play polo at **Fair Hills Farms**.
- 25 Pop into an **open house!**
- 26 Lend a hand with the **Topanga Trash Warriors**, Sundays at 7 am, starting at the Post Office.
- 27 Hunt for Topanga’s unofficial mascot—the **Flying Pig**—and stay open to the wild and wonderful on Scenic Route 27.









LOOK FOR TOPANGA'S BRICK-AND-MORTAR  
STORES & PUBLIC SPACES ON THE

# Visitor Fun Map!

FIND MORE INFO ON THE BOLD & GOLD  
BUSINESSES IN THIS DIRECTORY!

## SHOP LOCAL!

### LEGEND

#### Topanga Cyn Blvd, "Our Main Street"

1. Fahmina
2. Fair Hills Farms
3. The 1909
4. Dae-Myung Martial Arts Academy
5. Dunn Pellier Media
6. Advanced Construction Allies (ACA)
7. Cafe on 27
8. Topanga Living Café (TLC)
9. Eli's Bee Company
10. The Mountain Mermaid Butterfly Day
11. Topanga Community Center (TCC)  
*Topanga Symphony, Farmers Market  
Topanga Days, Playground*
12. Will Geer Theatrical Botanicum
13. Rosewood
14. JTD Architects
15. Topanga New Times
16. Sun Child
17. Perfumera Curandera
18. Topanga Film Festival
19. Canyon Ranch for Dogs
20. Froggy's
21. Topanga Creek Outpost
22. Topanga Elementary Charter School  
*Topanga Trash Warriors (roaming)*
23. Topanga Library
24. Bird's Nest Salon
25. Moona Star Collective
26. Pebbles

#### Old Topanga Canyon Road

27. Inn of the Seventh Ray
28. The Spiral Staircase
29. Old Canyon Stables
30. Topanga Christian Fellowship
31. Your Body Solutions

32. Children's Corner Preschool
33. Chabad of Topanga / Montessori Preschool
34. Manzanita School
35. Royal Dog Academy
36. Cali-Camp at Big Rock Ranch  
*Gate Page 2*
37. La Chingona Tacos (roaming)

#### Pine Tree Circle

38. Honest Rituals
39. GlynnDesignBuild
40. Innata Regenerative Health & Chinese Medicine
41. Topanga Historical Society
42. Pilates in Topanga (Integration Studios)
43. Topanga Acupuncture, Bodywork, Chiropractic
44. Canyon Bistro & Wine Bar
45. Fairytale Cottage of Topanga
46. Awen Pilates
47. Artemis Studio LA
48. The Coop PR & Influencer Marketing
49. Ethereal Yoga
50. The Well-Lived Woman
51. The Well Refill
52. Topanga Home Grown
53. Watertly Café
54. Coldwell Banker Real Estate
55. Canyon Gourmet (roaming)
56. Kinship Station
57. Dayme Cosmetics
58. Alkemie Road Mobile Shoppe
59. Topanga Women's Circle
60. Flower Power
61. U.S. Post Office

#### The Courtyard

62. Endless Color
63. Corazón Culture & Arts Resource Center
64. Eco Rebel Trading House

65. Artists Matter Company Store
66. Sassafras Shoppe
67. Environment Friendly Cleaners
68. Be Love
69. Topanga Art Tile
70. SPACE Art & Supply
71. Animal Clinic of Topanga
72. Topanga Mercantile
73. Busto & Sun Custom Hats
74. The Vanity Room Salon & Barber
75. Kramer Insurance Services
76. Braren Psychotherapy
77. Full Circle Free Community Compost Bin
78. The Beach Bus Stop
79. Topanga Creek General Store
80. Witch House Topanga
81. Hidden Treasures Vintage

#### Lower Fernwood

82. Snyder Sutton Real Estate
83. LoveTopanga.com (roaming)
84. Sienna Skin Care & Wellness
85. Cafe Mimosa
86. Topanga Properties
87. Sutherland Somatic Therapy
88. Topanga Medical
89. Campion Walker Landscapes
90. Fire Station #69  
*Fernwood - to Labyrinth, Top of the World*
91. Country Natural Foods
92. One Love Beauty
93. Camp Wildwood
94. Topanga Lumber & Hardware
95. Jalan Jalan Imports
96. Topanga Rocks
97. Tarrant Psychotherapy

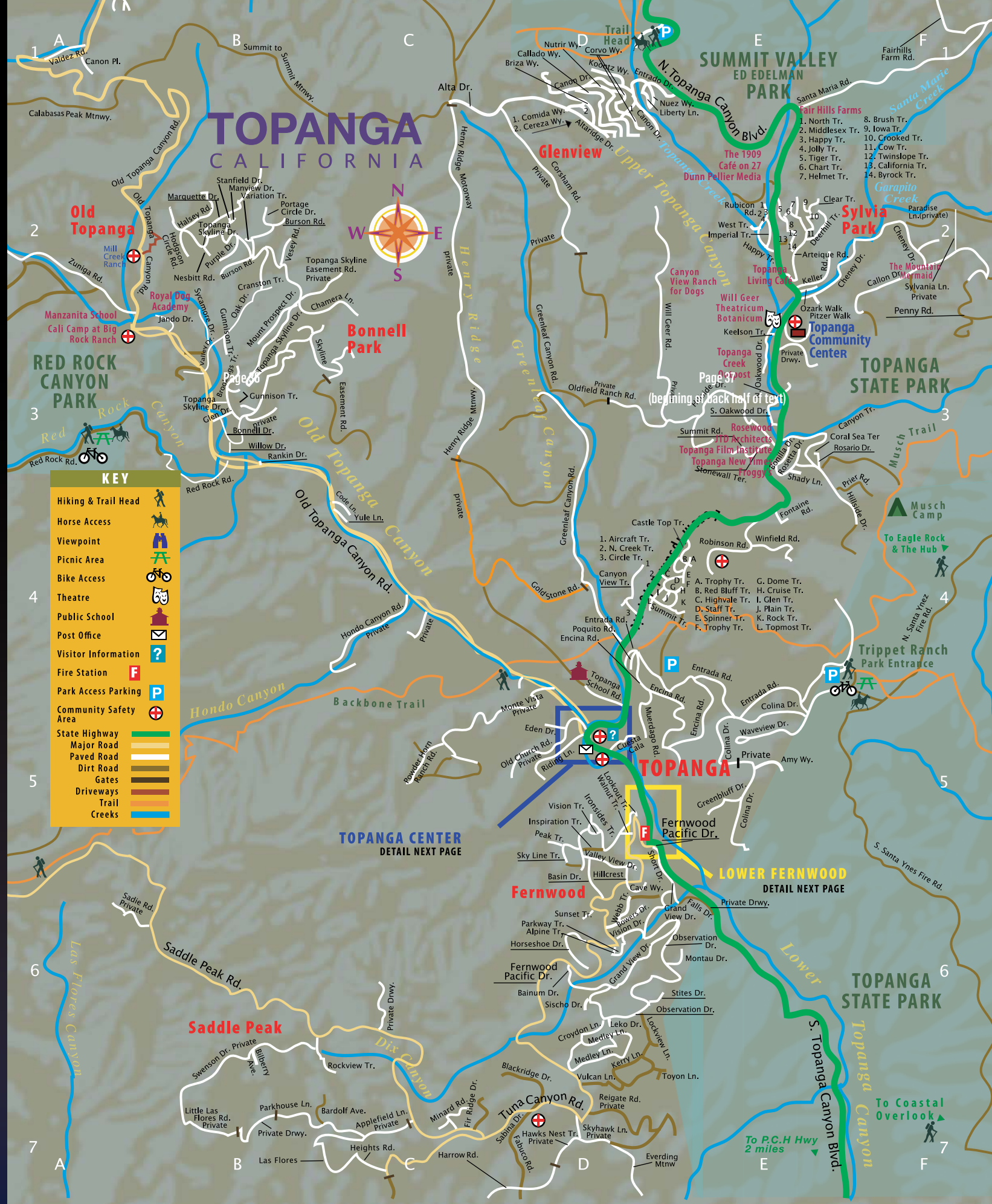
How many Coyotes  
can you find?

Answer at  
topangachamber.org!

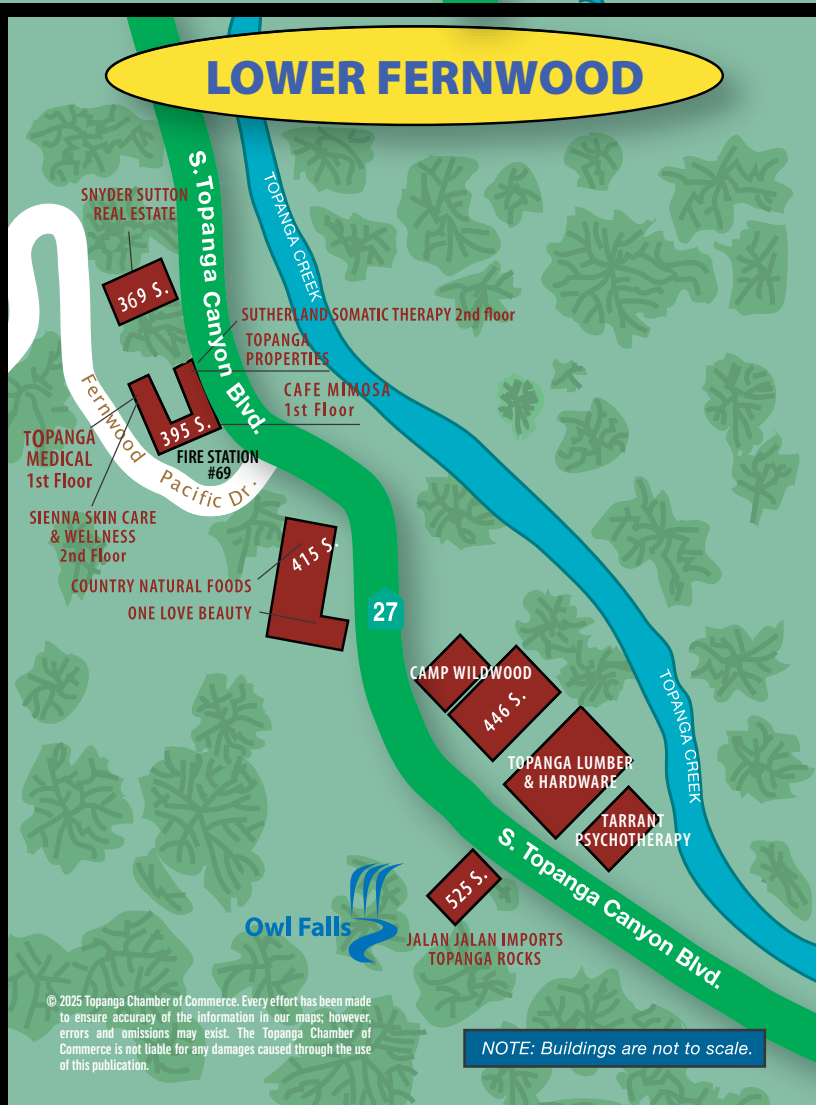
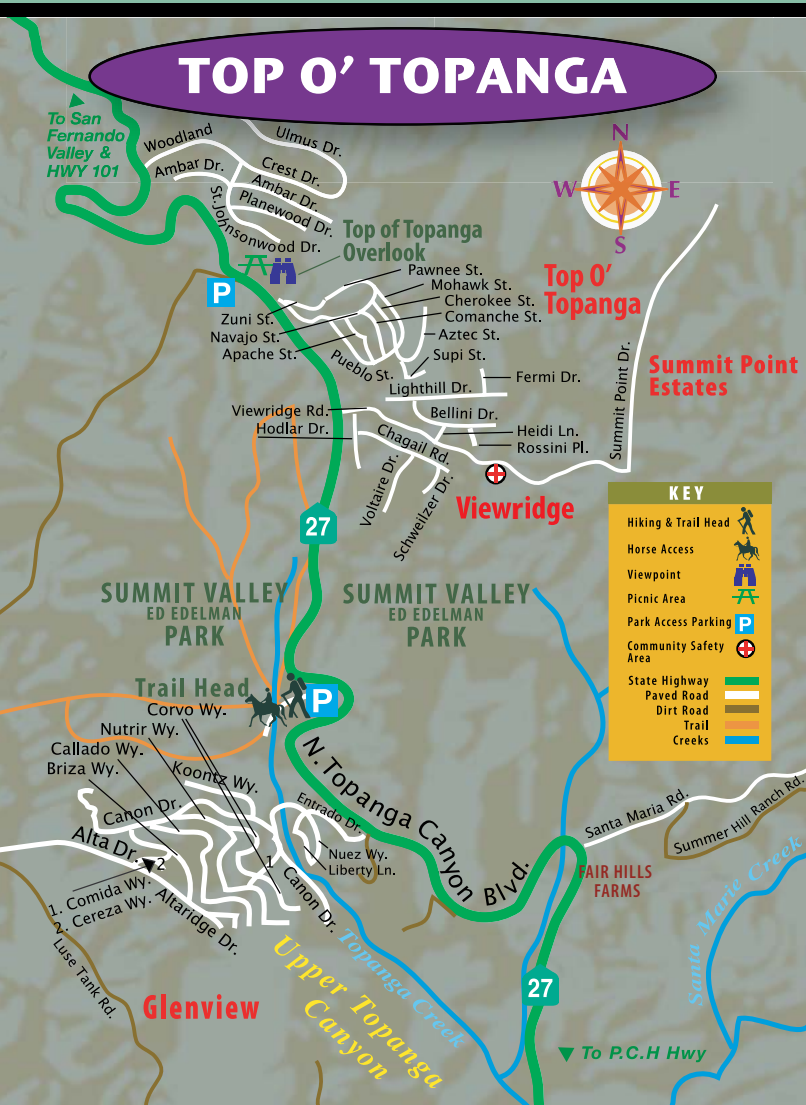
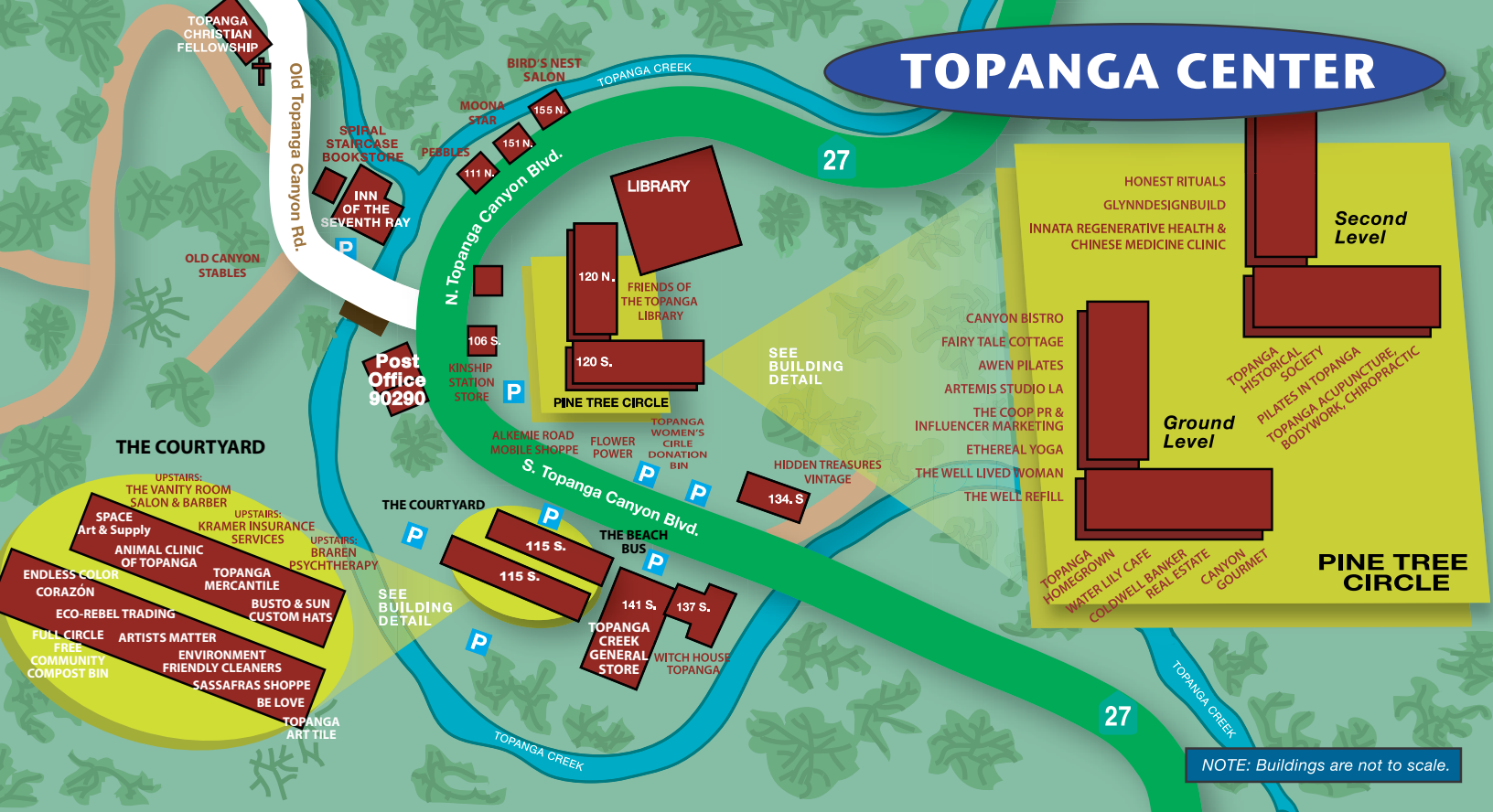


This map was  
created by Topanga  
artist **Pidge Jobst** -  
see page 19 for his information.

Digital Coloring / Art by **Georgia Saroj** - See her information page 43.











## ENTERTAINMENT, THEATER, DANCE &amp; MUSIC, CONTINUED

■ **Love After Death Solo Shows**

*Love on the Other Side of Death, Parts I, II, III*

Mary Guillermin

424.436.7318

@loveafterdeath\_soloshows

■ **Mary Crescenzo Band**

*Blues and Cabaret, Standards and Contemporary Tunes*

Mary Crescenzo and Paul Mesches

914.907.9381

marycrescenzo.com

■ **Randy Chance Music School**

*Teaches Guitar, Bass, Keyboard and Piano*

Randy Chance

310.455.8984

randychance.com

■ **Red Door Escape Room**

*You've Never Experienced An Adventure Like This!*

Christian Sanders

940.206.4577

reddooreescape.com

■ **Topanga Film Festival & Institute**

*Celebrating Two Decades of Art, Story & Creative Evolution*

Urs Baur, Adam Roberts

1111 N Topanga Cyn Blvd • topangafilmfestival.org

■ **Topanga Symphony**

*Community Orchestra*

Jerome Kessler, Music Director & Conductor 310.738.8065

topangasympphony.org

■ **Will Geer Theatricum Botanicum**

*Idyllic Open-Air Theatre, Repertory Season,*

*School Groups & Drama Camp*

Ellen Geer

310.455.2322, 310.455.3723

1419 N Topanga Cyn Blvd • theatricum.com



Will Geer  
**Theatricum Botanicum**

Summer Repertory Season June - October  
Theatre Camps & Year-round Classes for All Ages

[www.theatricum.com](http://www.theatricum.com)  
1419 North Topanga Cyn. Blvd.  
Topanga, CA 90290  
Box Office: 310-455-3723



MARY GUILLERMIN &  
THE FEMININITY PROJECT  
present  
**LOVE** ON THE OTHER SIDE  
OF DEATH  
parts I, II, & III

A trilogy of plays  
telling stories of life after death  
and lives before this one.

Mary is a spiritual guide to the Feminine Divine,  
with the help of over 45 years following the Divine Mother  
Creatrix, and her unique individually-crafted  
Sacred Archetypes cards.

Card readings offering a glimpse into your soul are  
available online or in-person.

Donations accepted but not required.

For information about performances or card readings, text  
Mary at: (424) 436 7318



PLEASE SUPPORT! BEFORE CREATIVE HUBS DISAPPEAR.

**CORAZÓN**  
Culture & Arts Resource Center — Topanga

HEARTBEAT. TOPANGA.

ORAL STORYTELLING  
PRESERVING TRADITION AND  
MEANING, KEEPING ALIVE WISDOM,  
CONNECTING US TO NATURE AND  
OUR (TRUE) NATURE.

MULTICULTURAL FOCUS WITH CONVERSATIONS  
ON CULTURE.

ECLECTIC BOOK & BROADSIDE HUB WITH A  
FOCUS ON THE SMALL PRESS REVOLUTION ERA  
& NEW WORKS.

CHANTING FOR PEACE HEART SUTRA MEDITATION

SOMATIC & ECSTATIC MOVEMENT, POETRY, LIFE DRAWING FOLK  
HERBALISM & WELLNESS WORKSHOPS, UNJAMS, JOY & UNITY  
KUMU HULA ANA LIZA KALAUOKEKUPUKUPU ABUAN MC KEON  
UP THE DRONE MEDITATIONS, SINGING CIRCLES, PEACE & LOVE  
POSTCARD & ZINE MAKING. CREATIVE HEARTS & SPIRITS  
AND SOLUTION-BASED COMMUNING. MULTICULTURAL HUB

TOPANGA'S 2ND SATURDAYS, 9PM [gjo@corazontopanga.com](mailto:gjo@corazontopanga.com)





## Always wanted to play an instrument?



Retired folks are learning the ukulele  
in our amazingly fun “university”  
on Zoom every day with Melanie!

**Guaranteed success** 👍

Call us: 310.403.3159  
[www.GetStartedPlayingUkulele.com](http://www.GetStartedPlayingUkulele.com)

### FINANCIAL SERVICES

#### ■ Hulthage Family Office

Financial Advising  
Ingemar Hulthage 310.456.7830

#### ■ Marina Financial Funding

Real Estate Financing and Sales  
Roberta Koehl 310.455.0021  
[roberta@marinafinancialfunding.com](mailto:roberta@marinafinancialfunding.com) • [marinafinancialfunding.com](http://marinafinancialfunding.com)

### GRAPHICS & WEB DESIGN

#### ■ Georgia Saroj, 2D + 3D Artist

Graphic Design & Illustration for Print & Website  
Georgia Saroj 310.804.9729 (texts preferred)  
[@ggsaraj](mailto:@ggsaraj)

#### ■ Sonny Boy Studios

Branding, Logo Design, and Fine Art  
Robert Novak  
[sonnyboystudios@mac.com](mailto:sonnyboystudios@mac.com)

#### ■ Printing Zone, Inc.

Copy, Printing, Mailbox & Shipping  
Razmik Davidian 818.225.0202  
22815 Ventura Blvd, Woodland Hills  
[printingzoneinc.com](http://printingzoneinc.com) • [info@printingzoneinc.com](mailto:info@printingzoneinc.com)

#### ■ Waking State Design

Graphic Design & Branding for Print, Signage, Websites, Annual Reports  
Tamara Gould 310.936.2890  
[wakingstate.com](http://wakingstate.com) • [tamara@wakingstate.com](mailto:tamara@wakingstate.com)

### HEALTH, HEALING & FITNESS

#### ■ Ballet for Topanga

The Ballet Studio in the Canyon!  
Sherry Jason 310.455.3939  
[topangaballet.com](http://topangaballet.com)

#### ■ Dae-Myung Martial Arts Academy

Taekwondo Classes for Children & Adults Year-Round  
Edison Park 310.774.1855  
[vikinglance@yahoo.com](mailto:vikinglance@yahoo.com)

#### ■ Dunn Pellier Media

Health & Wellness Public Relations  
Nicole Dunn 844.WELLPR1, 844.935.5771  
[dunnpelliermedia.com](http://dunnpelliermedia.com)

#### ■ Family Health

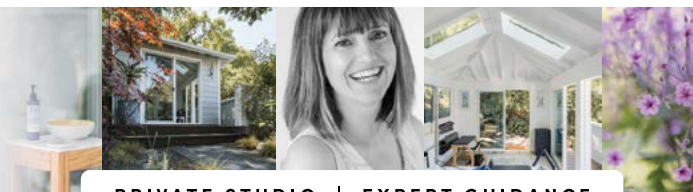
Homeopath & Nutritionist  
Gail McDonald-Tune 310.428.1257  
Topanga Chamber of Commerce Past President

#### ■ Loving Hands Children's Home

Nurturing the Holistic Development of Vulnerable Children  
Janiese Finney 424.781.8194  
[lovinghandschildrenshome.org](http://lovinghandschildrenshome.org)

## PRIVATE AND SEMI-PRIVATE PILATES

WITH MICHELLE DONATI, CERTIFIED INSTRUCTOR



PRIVATE STUDIO | EXPERT GUIDANCE

### IN THE HEART OF TOPANGA

Strengthen your body, calm your mind,  
and escape to a peaceful Pilates  
studio beneath the trees.

START YOUR PILATES JOURNEY TODAY

[PILATESMD.COM](http://PILATESMD.COM)

(310) 779-6542 | [michelle@pilatesmd.com](mailto:michelle@pilatesmd.com)

WAKING  
STATE  
DESIGN

Graphic Design  
Storytelling  
Fine Art  
Creativity Workshops

Tamara Gould, CEO

310.936.2890 • [tamara@wakingstate.com](mailto:tamara@wakingstate.com)  
[wakingstate.com](http://wakingstate.com)





## HEALTH, HEALING &amp; FITNESS, CONTINUED

### ■ Luna Optometry & Eyewear Gallery

*A Holistic Approach to Modern Eyecare*

Emily James

747.232.2202

22247 Mulholland Hwy, Calabasas • lunaoptometry.com

### ■ Marlene Frantz, MA, MFT, Certified Jungian Analyst

*Dream Groups and Therapy for Individuals, Couples, Adolescents, and Children*

Marlene Frantz

310.455.2298

### ■ Mary Crescenzo, Author

*Author of "The Planet Alzheimer's Guide..."*

Mary Crescenzo

914.907.9381

marycrescenzo.com

### ■ Living Wellness Foundation

*Arts, Healing & Culture*

Michele and Philip D'Arbanville

310.403.7612

Livingwellness.com

### ■ Pilates in Topanga (Integration Studios)

*Private & Semi-Private Sessions*

Jocelyn Berry

818.606.9356

120 S Topanga Cyn Blvd, Suite 208 • pilatesintopanga.com

### ■ Pilates MD

*A Peaceful Pilates Escape*

Michelle Donati

310.779.6542

pilatesmd.com

### ■ Porchia's WISH - Whole Integrated Self Health

*Mind-Body Medicine, Spiritual Therapist Featured in*

*HEAL Documentary*

Dianne Porchia, MA, DMBM

310.455.2851

Topanga Chamber of Commerce Past President

porchiaswish.com

### ■ Sutherland Somatic Therapy

*Somatic Experiencing Practitioner (SEP) for 20 years*

Azure Amanda Sutherland

818.445.9908

395 S Topanga Cyn Blvd, Suite 202A • amandasutherland.com

# PRINTING ZONE INC

CUSTOM DESIGN | PRINT | LARGE FORMAT  
CUTTING EDGE DIGITAL PRINT TECHNOLOGY

SHIPPING | MAILBOX | NOTARY

818 225 0202

orders@printingzoneinc.com



22815 Ventura Blvd. | Woodland Hills, CA 91364

## Pilates in Topanga

120 S. Topanga Canyon Blvd #208

818 606-9356

pilatesintopanga.com




## LUNA OPTOMETRY



Comprehensive  
Eye Exams  
Contact Lenses  
Optical

Call or visit us online to book your appointment:  
747.232.2202 LunaOptometry.com

22247 Mulholland Hwy, Calabasas, CA 91302  
Located within Gelson's Village - Most insurance accepted

## Your Body Solutions

By Carlo Petrini CPT, LMT

Unleash Your Best Life with **Personal Training, Sports Medicine, and Integrative Healing Services.**



### Wellness Services:

- ▶ Yoga
- ▶ Chi Gong
- ▶ Meditation
- ▶ Breathwork
- ▶ Detox Protocols

### Fitness Services

- ▶ Personal Training
- ▶ Group Classes
- ▶ Weight Loss
- ▶ Nutrition
- ▶ Sports Medicine
- ▶ Recovery for Athletes
- ▶ Injury Rehab
- ▶ Mobility & Flexibility

Call to claim your complimentary 15-minute Health Consultation.  
☎ 310-430-3268 🌐 YOURBODYSOLUTIONS.COM





## HEALTH, HEALING &amp; FITNESS, CONTINUED

■ **Tarrant Psychotherapy**

*Somatic Experiencing to Treat PTSD and Single Event Trauma*  
Alexander Tarrant 310.800.1702  
540 S Topanga Cyn Blvd • alexandertarrant.com

■ **Topanga Acupuncture, Bodywork, Chiropractic**

*Integrative Health Care for People Ready to Make a Change*  
Nancy Marcucella 310.455.2225  
120 S Topanga Cyn Blvd, Suite 210  
nancymarcucella.com

■ **Transformational Health & Wellness**

*For Wellbeing in Body, Mind and Spirit*  
Pamela McBride 310.455.0951  
pamelamcbride.com

■ **We All Feel**

*Online and In-Person Support Groups*  
Amanda Sacks, LCSW 201.788.6632  
weallfeel.com

■ **Your Body Solutions**

*Personal Training, Sports Medicine, Health & Wellness Coaching*  
Carlo Petrini 310.430.3268  
yourbodysolutions.com

## HOME &amp; GARDEN, MAINTENANCE &amp; SUPPLIES

■ **Absolute Best Electric**

*Affordable, Professional Electrician in Calabasas*  
Jim Allen 818.225.1314  
absolutebestelectric.com

■ **Danshamir Green Cleaning Services**

*Residential & Business Cleaning with All Organic Products*  
Mari Mira, Daniela Aguilar 310.970.4713, 818.916.9802  
greencleaningservicesla.com

■ **Eco-Rebel Trading House**

*Organic Lifestyle & Alternative Technologies*  
Hannah Wear, Kevin Parkhurst 541.913.6131  
hannah@digservices.com

■ **Expo Propane**

*Environmentally Friendly Energy for Everyone*  
Sean O'Hara 818.838.4400  
expopropane.com

■ **Franklin's Ace Hardware**

*Serving Our Community Since 1952*  
Chip Kurzeka 818.347.6800  
21936 Ventura Blvd, Woodland Hills  
franklinshardware.com

■ **Green Rodent Restoration**

*Eco-Friendly Rodent Experts*  
Lisa Alexandrian 747.998.2396  
lisa@greenrodentrestoration.com

■ **Jalan Jalan Imports**

*Bali Imports*  
Brian Gibson 310.455.2254  
525 S Topanga Cyn Blvd • jalanjalanimports.com

■ **Topanga Lumber & Hardware**

*50 Years in Business!*  
Willie Chaides 310.455.2047  
506 S Topanga Cyn Blvd • topangalumber.com

## INSURANCE SERVICES

■ **Document Your Home**

*3D Walk-In Tours, Property Insurance Documentation*  
Bruce Royer 310.455.7120  
Topanga Chamber of Commerce Past President  
documentyourhome.com



**LISA ALEXANDRIAN**  
MARKETING DIRECTOR

747.998.2396  
lisa@greenrodentrestoration.com

9820 Owensmouth Ave. Unit 1  
Chatsworth, CA 91311

[www.greenrodentrestoration.com](http://www.greenrodentrestoration.com)



## Your Eco-Friendly Rodent Experts.

Attic Cleaning | Crawspace Cleaning  
Insulation Replacement | Air Duct Replacement  
Rodent Control | Property Restoration  
Energy Efficient Solutions  
Recurring Rodent Maintenance Program

## TOPANGA LUMBER & HARDWARE CO., INC

RESIDENTIAL • COMMERCIAL • INDUSTRIAL and #1 ENTERTAINMENT SUPPLIER

YOUR CLOSEST NEIGHBORHOOD BUILDING SUPPLY COMPANY

506 S. Topanga Cyn. Blvd. Topanga, CA 90290

18450 Parthenia Pl. Northridge, CA 91325

Open Monday - Saturday (closed Sundays)

MONDAY - FRIDAY: 6:00 A.M. - 4:00 P.M.

SATURDAY: 7:00 A.M. - 4:00 P.M.

TEL: 310.455.2047

FAX: 310.455.0614

### WE OFFER AN EXTENSIVE VARIETY OF:

- |                         |                     |                  |                        |
|-------------------------|---------------------|------------------|------------------------|
| • PLUMBING              | • PLYWOOD           | • FENCING        | • SHOVELS              |
| • LIGHTING & ELECTRICAL | • LANDSCAPE TIMBERS | • CONCRETE BLOCK | • LEATHER GLOVES       |
| • FASTENERS             | • MOULDING          | • RUBBER BOOTS   | • CEMENT, SAND & MORE! |
| • HARDWARE              | • DOORS & WINDOWS   | • PLASTIC BAGS   |                        |
| • POWER & HAND TOOLS    | • PEELER POLES      | • SAND BAGS      |                        |
| • DECKING               | • PAINT             | • FENCING        |                        |
| • MOULDING              | • CLEANING SUPPLIES | • MASKS          |                        |
| • LUMBER & ELP PRODUCTS | • STOVE PIPES       | • GLASSES        |                        |
|                         |                     | • BROOMS         |                        |
|                         |                     | • RAKES          |                        |

WE ARE YOUR  
**Best**  
STORE!

### WE OFFER COMPETITIVE PRICES!

LET US BID YOUR NEXT CONSTRUCTION PROJECT, WE GOT IT ALL!

[willie@topangalumber.com](mailto:willie@topangalumber.com)

[felipe@topangalumber.com](mailto:felipe@topangalumber.com) for Studio Supplies

VISIT OUR WEBSITE:

[WWW.TOPANGALUMBERANDHARDWARE.COM](http://WWW.TOPANGALUMBERANDHARDWARE.COM)





# KRAMER

INSURANCE SERVICES, INC.



## HOME - HEALTH - LIFE - COMMERCIAL

As your local Topanga agency we have extensive knowledge on multiple lines of insurance and specialize in high brush areas. At Kramer Insurance, we are proud to be part of the team that helped get Topanga Firewise Certified and can help you understand how this both helps our community and make sure you get the discounts available to you.

115 S. Topanga Canyon Blvd Unit K  
Topanga, CA 90290  
310-455-0355  
max@kramerinsurance.com



License#0G39751

## INSURANCE SERVICES, CONTINUED

### ■ Kramer Insurance Services, Inc.

Home, Health, Life, Commercial

Max Kramer

310.455.0355

115 S Topanga Cyn Blvd, Unit K

max@kramerinsurance.com • kramerinsurance.com

### ■ LSI Insurance Agency

The Right Insurance for Your Needs

Craig Phelps

510.633.0355

888.809.9009 - Toll Free • lsiagency.com

## LEGAL SERVICES

### ■ Law Office of Pardeep Joshi, a Professional Corporation

Family Law, Landlord / Tenant, Immigration Law

Pardeep Joshi

310.455.0507

pardeepjoshilaw@aol.com

### ■ Ronald Fomalont, Attorney at Law

Personal Injury

Ron Fomalont

310.459.9400

Topanga Chamber of Commerce President

5850 Canoga Ave, Suite 400 Woodland Hills

fomalont.com • law@fomalont.com

## MEDICAL SERVICES

### ■ Alisa J. Land, M. D.

Adult Psychiatry and Psychotherapy

Alisa Land

310.428.2833

dralisaland.com

## NONPROFIT ORGANIZATIONS

### ■ Baby Rhino Rescue

Saving the Rhino from Extinction. Donate or Adopt Today!

Helena Kriel

310.403.7289

babyrhinorescue.org



USING STATE-OF-THE-ART TECHNOLOGY,  
OUR SERVICES INCLUDE:

- 3D WALK-IN TOUR
- PROPERTY INSURANCE DOCUMENTATION
- PHOTOS, VIDEO, VIRTUAL REALITY TOUR
- ACCURATE FLOOR PLANS

STARTING AT ONLY \$449

CALL 310.455.7120  
INFO@DOCUMENTYOURHOME.COM

A division of  RoyerStudios



## We Help You Protect What's Important to You

With proper insurance your home, auto and savings may be protected.

We offer a wide range of coverage to meet your individual needs.

Craig Phelps | 626.437.7900 | cphelps@lsiagency.com

Ins. Lic. 0G38140

## The Law Offices of Pardeep Joshi

a Professional Corporation

• Family Law

• Landlord / Tenant

• Immigration Law

• Civil Litigation

**Pardeep Joshi**

pardeepjoshilaw@aol.com

**310.455.0507**

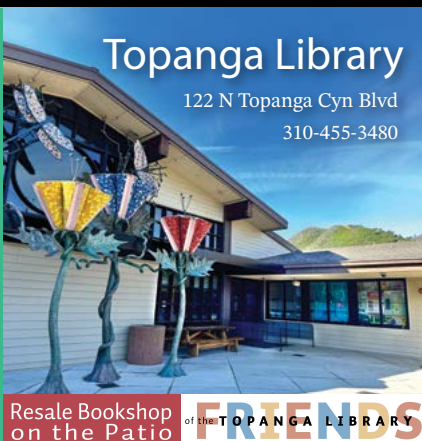




**RONALD J.  
FOMALONT**  
ATTORNEY AT LAW

WARNER CENTER  
5850 CANOGA AVE., SUITE 400  
WOODLAND HILLS, CA 91367  
310-459-9400 • FAX 818-992-6138  
law@fomalont.com  
www.fomalont.com  
*Handling personal injury matters for over 40 years*

FREE things at the library:  
Laptop & Hotspot Loans  
Digital Resources  
Online Learning  
Community Programs  
& Events  
CA State Library Parks  
Pass for free parking at  
Topanga State Park &  
200 CA parks/beaches.  
& so much more!



## Topanga Library

122 N Topanga Cyn Blvd  
310-455-3480

Resale Bookshop  
on the Patio

FRIENDS  
of the TOPANGA LIBRARY

### NONPROFIT ORGANIZATIONS, CONTINUED

#### ■ Friends of Topanga Library

Visit our Bookshop on the Patio of the Topanga Library!  
Jenni Klemp 310.849.5651  
friendsoftopangalibrary@gmail.com

#### ■ Full Circle Compost

Providing Community Compost Bins at the Theatricum,  
behind EcoRebel Trading House, and at Topanga Lumber  
Cecilie Stuart 310.871.0061  
fccompost.org

#### ■ Greener Empowerment Foundation

Green Solutions, Education & Stewardship  
Hannah Wear, Kevin Parkhurst 541.913.6131  
greenerfoundation.org

#### ■ Loving Hands Children's Home

Nurturing the Holistic Development of Vulnerable Children  
Janiese Finney 424.781.8194  
lovinghandschildrenshome.org

#### ■ Topanga Animal Rescue

First Responders for Animals in Emergency Situations  
topangaanimalrescue.org 310.455.7268

#### ■ Topanga Association for a Scenic Community (TASC)

Roger Pugliese 310.455.2951

#### ■ Topanga Canyon Docents

Educating People About Topanga State Park's Ecosystem & History  
Karin Benson 310.455.3143  
topangacanyondocents.org

#### ■ Topanga Christian Fellowship

A Non-Denominational Congregation Worshipping God  
269 Old Topanga Cyn Rd  
Patricia Moore 310.455.1048  
topangachristianfellowship.org

## Topanga Historical Society

Discover our Memberships, Programs, and Archive:  
www.topangahistoricalsociety.org

The THS was organized in 1974 by a group of dedicated community leaders who recognized the urgent need to collect and preserve records of Topanga's unique history and to make them available to future generations. The Society maintains an online Archive, a Center in the Pine Tree Circle, and presents quarterly local history programs.



## GREENER EMPOWERMENT FOUNDATION



BUILDING FOUNDATIONS FOR GREENER GENERATIONS



### SUSTAINABLE SATURDAYS

Planting & Craft Demonstrations  
Native Plants & Trees For Sale  
Locally Grown Pollinator Plants  
Veggie Seeds & Starter Plants



### TOPANGA FARMERS MARKET

Native Plants & Seeds  
Edible Starter Plants  
Environmental Education  
Community Composting



### COMMUNITY RESILIENCY

Locally Harvested Hearts & Minds  
Ecological Literacy Workshops  
Build Community Connections  
Stewarding the Land

127 S. TOPANGA CYN BLVD, TOPANGA, CALIFORNIA 90290  
INFO@GREENERFOUNDATION.ORG • WWW.GREENERFOUNDATION.ORG





## TOPANGA ASSOCIATION FOR A SCENIC COMMUNITY

PO BOX 352 TOPANGA CA. 90290 | tasc4topanga.org

Our organization, founded in 1963, has been the primary source in the protection from overdevelopment in Topanga.

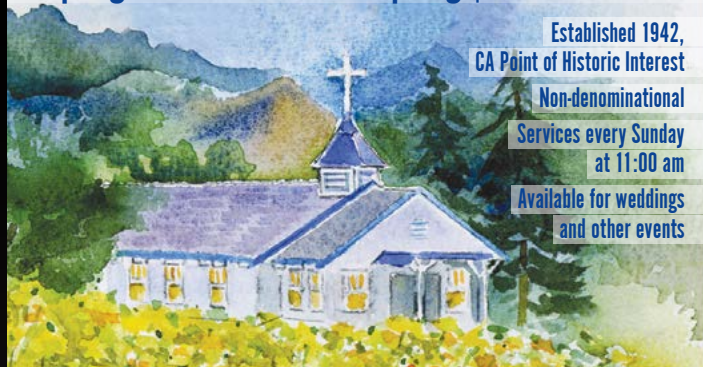
**TopangaChristianFellowship.org | 310.455.1048**

Established 1942,  
CA Point of Historic Interest

Non-denominational

Services every Sunday  
at 11:00 am

Available for weddings  
and other events



## TOPANGA NEW TIMES

VOICE OF THE MOUNTAINS



TopangaNewTimes.com

## TOPANGA NEW TIMES

### NONPROFIT ORGANIZATIONS, CONTINUED

#### ■ Topanga Coalition for Emergency Preparedness (TCEP)

Emergency Preparedness Education & Disaster Status Info  
James Grasso, Scott Ferguson 310.455.3000  
tcep.org

#### ■ Topanga Community Center

Independently Owned by the Citizens of Topanga  
Home of Topanga Days  
Dayna Miller 310.425.3624  
topangacommunitycenter.org

#### ■ Topanga Film Festival & Institute

Celebrating Two Decades of Art, Story & Creative Evolution  
Urs Baur, Adam Roberts  
1111 N Topanga Cyn Blvd • topangafilmmfestival.org

#### ■ Topanga Historical Society

Preserving Topanga's Unique History for Future Generations  
Ed O'Neill  
topangahistoricalsociety.org

#### ■ Topanga Symphony

Community Orchestra  
Jerome Kessler, Music Director & Conductor 310.738.8065  
topangasympphony.org

#### ■ Topanga Women's Circle

Helping the Homeless  
Linda Ilsley, Teresa Royer 310.663.1894  
topangawomenscircle.org

#### ■ Will Geer Theatricum Botanicum

Idyllic Open-Air Theatre, Repertory Season,  
School Groups & Drama Camp  
Ellen Geer 310.455.2322, 310.455.3723  
1419 N Topanga Cyn Blvd • theatricum.com

### PHOTOGRAPHY & DOCUMENTATION

#### ■ Document Your Home

3D Photo-Tours to Document Property  
Bruce Royer 310.455.7120  
Topanga Chamber of Commerce Past President  
documentyourhome.com

#### ■ Cassel Photography & Documentation

Documentation Services & Real Estate Photography  
Richard Cassel 818.421.9154  
casselphotography.com

#### ■ Wes Mathur Media

Drone Videographer, Broadcast & Media Production  
Wes Mathur  
wesmathur.com

### PUBLICATIONS

#### ■ Dogs in Topanga, Poems of the Laughing Buddha

And More Books That Make People Happier  
Jane Marla Robbins 310.455.1579  
janemarlarobbins.com



Topanga Symphony Logo  
Merchandise

Available for purchase



Lapel Pin \$12.00



Canvas Tote - \$40.00



Cap \$30.00

Support the Topanga Symphony. wear our new Logo around town.





## PUBLICATIONS, CONTINUED

■ **Topanga New Times**

*Lifestyle, Environment, Arts in the Santa Monica Mountains*  
 Bonnie Morgan 310.425.3624  
 1111 N Topanga Cyn Blvd, Suite 5 • topanganewtimes.com

■ **The Ghastly Year**

*Historical Fiction Set in WW2 Latvia*  
 Diana Mathur, Novelist 310.266.3816  
 dianamathur.com

## REAL ESTATE

■ **Archetype Structures, Inc.**

*Design, Build, Consulting, Brokerage, Fix It*  
 John Bertolli, General Contractor 310.291.8884  
 archetypestructures.com

■ **Chantal von Wetter, Local Realtor**

*Topanga Properties*  
 Chantal von Wetter 310.745.8991  
 topangaproperties.com • 395 S Topanga Cyn Blvd, Suite 101

■ **Christina Nelson**

*Sotheby's International Realty*  
 Christina Nelson 310.871.8097  
 christina.nelson@sothebys.realty

■ **Chryssa Lighthead, Realtor**

*Sotheby's International Realty*  
 Chryssa Lighthead 310.663.3696  
 ineveryquit.com

■ **Drew Snyder**

*Snyder Sutton Real Estate Sales & Leasing*  
 Drew Snyder 310.864.7123  
 369 S Topanga Cyn Blvd • snydersutton.com

■ **Love Topanga**

*Go Global & Stay Local*  
 Catherine Campbell 310.663.9039  
 lovetopanga.com

*If this happened to your home  
 could you name everything in it?*



Document your property

**CASSEL**  
 PHOTOGRAPHY & DOCUMENTATION

818-421-9154 rcasselphoto@gmail.com  
 casselphotography.com

**SNYDER SUTTON**  
 REAL ESTATE

SnyderSuttonRE.com

310 455 0310

369 S Topanga Cyn Blvd  
 Topanga, CA 90290

Luxury real estate.  
 Passionate local agents.  
 Innovative technology.  
 An experience like no other.



COMPASS



**The Wright Way Team**

**Adrian Wright**

818.939.6415  
 adrian.wright@compass.com  
 DRE 00935559

**Jordan Wright**

818.746.6987  
 jordanwright@compass.com  
 DRE 01952694





## REAL ESTATE, CONTINUED

■ **Marina Financial Funding**

Real Estate Financing and Sales

Roberta Koehl

marinafinancialfunding.com

310.455.0021

■ **Cassel Photography & Documentation**

Documentation Services &amp; Real Estate Photography

Richard Cassel

casselphotography.com

818.421.9154

■ **Philip D 'Arbanville**

Real Estate and Financing

Philip D'Arbanville

pdarbanville@gmail.com

310.663.5007

■ **Pine Tree Circle**

A Place for Community

pinetree.topanga@gmail.com

■ **Sarah Priest Design**

Home Staging and Landscape Design

Sarah Priest

sarahpriest.com

310.403.2503

■ **Sophie Zeiler**

Snyder Sutton Real Estate

Sophie Zeiler, Freddi Swanson

SophieandFreddi.com

310.502.7206

■ **Tanya Starceвич, Realtor**

Luxury Advisor, Keller Williams, Top-Ranked Agent

Tanya Starceвич

tanyastarceвич@gmail.com • canyoncoastestates.com

310.739.4216

■ **William Preston Bowling**

Sotheby's International Realty

William Preston Bowling

topangaland.com

310.428.5085

**TANYA STARCEVICH** REALTOR®Ranked Top 3% Keller Williams  
Pacific Palisades | Malibu | Topanga

310.739.4216

tanyastarceвич@gmail.com

www.canyoncoastalestates.com

DRE# 01864259  
BRE# 01499010*Go Global... & Stay Local***Catherine Campbell**

DRE#: 01164030

LoveTopanga.com

310.663.9039

catherine@lovetopanga.com



DRE #01400450

*Your LOCAL Real Estate Experts*Over 100 years of combined experience  
serving Topanga Canyon**ACTIVE LISTINGS****SIGN UP FOR OUR****COMMUNITY NEWSLETTER****Chantal von Wetter**

(310) 745-8991

chantal@topangaproperties.com

BUYERS | SELLERS | NOTARY PUBLIC

**www.topangaproperties.com****William Preston Bowling**

Sotheby's International Realty

**310.428.5085 | TopangaLand.com**

williamprestonbowling@yahoo.com

*A  
Real Estate Agent  
You Can Trust***Sotheby's**  
INTERNATIONAL REALTY

DRE# 01393337

**Representing  
Buyers and Sellers**

Over 20 years in The Canyon





## REAL ESTATE, CONTINUED

■ **The Wright Way Team @ Compass**

*Luxury Real Estate. Passionate Local Agents.*

Adrian Wright, [adrian.wright@compass.com](mailto:adrian.wright@compass.com)

Jordan Wright, [jordanwright@compass.com](mailto:jordanwright@compass.com)

[compass.com/agents/the-wright-way-team](http://compass.com/agents/the-wright-way-team)

818.939.6415

818.746.6987

## RESTAURANTS, CATERING, FOOD & EVENT PLANNING

■ **Cafe on 27**

*Great Food & Views in the Heart of Topanga Canyon*

Amir Milani

424.272.7267

1861 N Topanga Cyn Blvd • [cafe-27.com](http://cafe-27.com)

■ **Cafe Mimosa**

*A French Cafe & Boutique*

Claire Denis, Pauline Cohn

310.455.4341

395 S Topanga Cyn Blvd • [cafemimosatopanga.com](http://cafemimosatopanga.com)

■ **Canyon Gourmet**

*Specialty Foods, Wine & Produce*

Peter Kagan

310.455.4200

120 S Topanga Cyn Blvd, Suite 110 • [canyongourmet.com](http://canyongourmet.com)

■ **Chef Mimi Engstrom Novak**

*Catering and Private Chef*

Mimi Engstrom Novak

310.428.5789

@chefmimiengstromnovak

■ **Endless Color**

*Pizza, Cafe, Market 10am - 9pm Everyday. Order Online!*

Matthew Morgan

310.752.6409

123 S Topanga Cyn Blvd • [endlesscolortopanga.com](http://endlesscolortopanga.com)

■ **Froggy's**

*Seafood, Music Venue*

Lance Roberts

310.923.1728

1105 N Topanga Cyn Blvd

■ **Inn of the Seventh Ray Restaurant**

*Creeside Dining, Elegance at its Finest... Host of*

*Topanga Chamber of Commerce Monthly Morning Mixer*

Lucile Yaney

310.455.1311

[innoftheseventhray.com](http://innoftheseventhray.com)

■ **La Chingona Tacos**

*Traditional Meat Dishes + Delicious Vegan, Vegetarian Offerings*

Adriana Lemus, Calvin Taylor

310.433.0136

[lachingonatacos.com](http://lachingonatacos.com)

■ **Topanga Creek General Store**

*Market at the Courtyard with Groceries, Sandwiches,*

*and a Deli with Gluten-Free Options*

Mike Bae, Simon Yoon

310.455.1250, 310.487.4465

141 S Topanga Cyn Blvd

■ **Topanga Farmers Market**

*Certified Farmer's Market, Fridays 9am - 1pm*

Kate Kimmel, Freddi Swanson 818.480.1118, 310.849.6958

At Topanga Community Center, 1440 N Topanga Cyn Blvd

[topangafarmersmarket.com](http://topangafarmersmarket.com)



ART BY DAVID DAYAN FISHER



395 S Topanga Cyn Blvd

Topanga CA 90290

(310) 455 4341

### Open

Monday through Friday

7 am til 2 pm

Saturday & Sunday

7 am til 4 pm








**AVAILABLE  
FOR PRIVATE EVENTS**

310-455-1728  
Call Lance 310-923-1728



## RESTAURANTS, CATERING, FOOD &amp; EVENT PLANNING, CONTINUED

■ **Topanga Living Cafe**

Nourishing Organic Food & Great Coffee 310.455.9888  
1704 N Topanga Cyn Blvd  
TopangaLivingCafe.com — Order Online!

■ **Water Lily Cafe**

Coffee Bar, Fresh Breakfast and Lunch 310.455.0401  
120 S. Topanga Cyn Blvd  
waterlilycafe.com

## RETAIL, GIFTS &amp; APPAREL

■ **Alkemie Road Shoppe**

Unisex Handmade Jewelry & Belts Designed in Topanga  
Alkemie Road Mobile Shoppe at Pine Tree Circle  
Dara Gerson, Ashley Lowengrub 323.620.4929  
120 S Topanga Cyn Blvd • alkemiejewelry.com

■ **Artemis Studio LA**

Full Service Interior Design Studio, Shop & Gallery  
Elizabeth Flynn 213.284.8738  
120 N Topanga Cyn Blvd, Unit 109 • artemisstudiola.com

■ **Baltic Mermaid**

Jewelry that Inspires, Crystals that Empower  
Online and Every Other Friday at the Farmer's Market  
Jessica McGraw  
balticmermaid.com

■ **Busto & Sun Custom Hats**

Traditional Venetian Technique, Modern Materials,  
and a Touch of California Sunshine  
Enrico Busto 323.287.4877  
115 Topanga Cyn Blvd • bustoandsun.com



**TOPANGA  
FARMERS  
MARKET**

**Organic Food & Artisan Goods  
Fridays 9-1**

**Topanga Community Center  
1440 N Topanga Cyn Blvd**

**@TopangaFarmersMarket  
TopangaFarmersMarket.com**



**123 South Topanga Canyon Blvd  
endlesscolortopanga.com  
@endlesscolorpizza  
310-752-6409**





Hand selected & consciously sourced fine crystals, minerals, fossils, handmade jewelry plus more fun items for everyone.



**\*USE CODE: TOPANGA15  
FOR 15% OFF OF YOUR ONLINE  
ORDER AT BALTICMERMAID.COM**

\* LIMIT ONE USE PER CUSTOMER

## Jewelry that Inspires, Crystals that Empower

Find us at the Topanga Farmers Market every other Friday.



## the Spiral Staircase

specializing in  
ancient &  
contemporary  
wisdom,  
gifts & jewelry

128 Old Topanga Cyn  
310-455-1315



CUSTOM HATS DESIGNED WITH YOU  
HANDCRAFTED IN TOPANGA

115 S TOPANGA CANYON BLVD

**BUSTO**  
AND SUN

### RETAIL, GIFTS & APPAREL, CONTINUED

#### ■ Gorgeous Goddess Wear

*Beautiful, Feminine Clothing Fit for a Goddess*

Kathleen Gildred 310.455.1603  
gorgeousgoddesswear.com

#### ■ Hidden Treasures Vintage

*Vintage Clothing & Unexpected Objets d'Art*

Darrell Hazen, Laura Watts 310.455.2998  
154 S Topanga Cyn Blvd • hiddentreasurestopanga.com

#### ■ Jalan Jalan Imports

*Bali Imports*

Brian Gibson 310.455.2254  
525 S Topanga Cyn Blvd • jalanjalanimports.com

#### ■ Luna Optometry & Eyewear Gallery

*A Holistic Approach to Modern Eyecare*

Dr. Emily James 747.232.2202  
22247 Mulholland Hwy, Calabasas • lunaoptometry.com

#### ■ Mervat Elias, Ceramic Artist

*Fine Ceramics*

Mervat Elias 559.586.1082  
Google Mervat Elias

#### ■ Moona Star Collective

*Handmade Clothing and Curated Goods*

Monica Zaidman 310.455.3088  
137 N Topanga Cyn Blvd • moonastarcollective.com

#### ■ Mother Fox Jewelry

Nancy Neal

213.308.9568  
@\_motherfox\_

#### ■ Omega Watches

*"Exact Time For Life"*

Yanni Tan 818.737.9012  
6600 Topanga Cyn Blvd, Suite 56, Canoga Park • swatchgroup.com

#### ■ Pebbles

*Boho Chic Clothing for Women + Kids, Gifts, Home*

Ann Lombardo 310.650.2757  
111 N Topanga Cyn Blvd • @pebblesclothing

#### ■ Sassafras Shoppe

*Nursery, Landscape Design, Retail*

Ronnie Corbett & Pami Ozaki 310.455.3388

#### ■ The Spiral Staircase

*Spiritual Shop and New Age Bookstore*

Lucile Yaney 310.455.3370  
128 Old Topanga Cyn Road • @spiralstaircasetopanga

#### ■ Topanga Art Tile & Design

*Handmade Art Tiles, Murals and Mosaics*

*—Design, Produce & Install*

Matt Doolin, Paul Doolin 310.455.3359, 310.403.7706  
115 S Topanga Cyn Blvd, Suite 137  
TopangaArtTile.com • Facebook • @topangaarttile

**Topanga  
Creek  
Outpost**

Handmade  
Leather Goods

Natural Full Grain Leather  
Classes • Workshops  
Retail • Wholesale



www.topangacreekoutpost.com • 310-455-2111





**Canyon Car Service**  
Your Personal Driver

It's NOT JUST A RIDE, IT'S AN EXPERIENCE!!!

Jenise@CanyonCarService.com  
call or text: **310.456.4284**

## RETAIL, GIFTS &amp; APPAREL, CONTINUED

■ **Topanga Creek Outpost**

Handcrafted Leather Goods

Chris Kelly

310.455.2111

1273 N Topanga Cyn Blvd • topangacreekoutpost.com

■ **Topanga Rocks**

Fine Crystals, Handcrafted Jewelry &amp; Exotic Collectibles

Brian Gibson

310.455.2254

525 S Topanga Cyn Blvd • jalanjalanimports.com

■ **Witch House Topanga**

Private Manor, Arts, Education &amp; Event Space

Tiberon Trambly, Sean FayeCullen

310.384.4305

137 S Topanga Cyn Blvd

@witchhousetopanga

## SPA, BEAUTY &amp; BARBER SERVICES

■ **Bird's Nest Salon**

An Aveda Hair Salon

Sasha Kramer

833.275.9627

155 N Topanga Cyn Blvd • birdsnestsalon.com

■ **Sienna Skin Care and Wellness**

Celebrating 30 Years of Care in Topanga Canyon!

Sally Powell

310.455.8696

395 S Topanga Cyn Blvd, Suite 204 • siennaskincare.com

## TRANSPORTATION

■ **Canyon Car Service**

Boutique, Full Service Team, Airport Runs &amp; Everywhere Else

Jenise Blanc Chance

310.456.4284

canyoncarservice.com



TOPANGA  
ROCKS

FINE CRYSTALS



Jalan Jalan  
Imports

BALI IMPORTS

Exceptional Crystals & Exotic Design Elements  
Statuary · Unique Gifts · Teak Furniture

TopangaRocks.com · JalanJalanImports.com  
@TopangaRocks

**310-455-2254**

525 S Topanga Cyn Blvd  
Topanga · CA 90290



Home of  
Owl Falls

## CELEBRATING 30 YEARS YOUNG SINCE 1995!

Facials ► Hydrafacials ► Microdermabrasion  
Brow & Lash Services ► Waxing ► Microcurrent  
Botox, Xeomin and Facial Fillers ► VI Peels  
Skinvive ► Sculptra ► PRP ► Hair Restoration  
Ultherapy PRIME® ► Microneedling



SIENNA SKIN CARE  
and Wellness

**10% OFF**  
for new clients  
(some restrictions apply)  
offer expires 8/31/25

**310.455.8696**

395 S Topanga Canyon Blvd • Topanga  
www.siennaskincare.com • instagram@siennaskincare





## Topanga Chamber of Commerce COMPANY Index

Absolute Best Electric .....	47, 29	Heather Bryant .....	25	Sutherland Somatic Therapy .....	45
Alisa J. Land, M. D. ....	49	Hidden Treasures Vintage.....	63	Tanya Starceovich, Realtor .....	57
Alkermie Road Shoppe .....	61	Home Productions US.....	19	Tarrant Psychotherapy .....	29, 47
Archetype Structures, Inc....	29, 55	Hulthage Family Office.....	43	The 1909.....	13
Artemis Studio LA.....	15, 17, 61	HVAC Consulting Solutions.....	23, 29	The Femininity Project .....	27
Baby Rhino Rescue.....	49	Inn of the Seventh Ray.....	59	The Ghastly Year.....	55
BAKADA Productions.....	19, 31	Jalan Jalan Imports.....	47, 63	The Mountain Mermaid .....	13, 21
Ballet for Topanga .....	31, 43	Jane Marla Robbins .....	29	TheoFilms .....	21
Baltic Mermaid.....	61	JG Crawford Music .....	31	The Spiral Staircase .....	63
Bird's Nest Salon.....	65	Joseph Rosendo Presents, Inc..	21	The Sterling-Watson Collective LLC.....	17, 31
Busto & Sun Custom Hats.....	61	JTD Architects.....	15	The Wright Way Team @ Compass.....	59
Cafe Mimosa.....	59	Kramer Insurance Services.....	49	Tommy Tucker Time.....	19
Cafe on 27.....	59	La Chingona Tacos.....	59	Topanga Acupuncture, Bodywork, Chiropractic.....	47
Calí-Camp at Big Rock Ranch.....	25	Law Office of Pardeep Joshi.....	49	Topanga Animal Rescue.....	15, 51
Camp Wildwood .....	25	Living Wellness Foundation .....	45	Topanga Architecture & Design.....	17, 19
Canyon Car Service.....	23, 65	Lizanne Judge Design.....	17	Topanga Art Tile & Design ..	19, 63
Canyon Gourmet.....	59	Love After Death Solo Shows .....	41	Topanga Association for a Scenic Community (TASC).....	51
Canyon View Ranch for Dogs.....	13	Love Topanga.....	55	Topanga Canyon Docents .....	51
Cassel Photography & Documentation.....	53, 57	Loving Hands Children's Home.....	25, 43, 51	Topanga Christian Fellowship ..	51
Chef Mimi Engstrom Novak.....	59	LSI Insurance Agency.....	49	Topanga Coalition for Emergency Preparedness (TCEP).....	53
Chris Conway.....	17, 23	Luna Optometry & Eyewear Gallery .....	45, 63	Topanga Community Center .....	13, 53
Christina Nelson .....	55	Malibu Patrol/Gates Security..	17, 25	Topanga Creek General Store.....	59
Chryssa Lightheart, Realtor .....	55	Manzanita School & Institute.....	25	Topanga Creek Outpost.....	65
Corazón Culture & Arts Resource Center.....	31	Marina Financial Funding.....	43, 57	Topanga Dreaming .....	13
CPM JONES Studio .....	19	Marlene Frantz, Artist.....	19	Topanga Farmers Market .....	59
Crescent Consulting.....	23	Marlene Frantz, MA, MFT.....	45	Topanga Film Festival & Institute.....	21, 41, 53
Curtis Caddell.....	29	Mary Crescenzo, Author.....	45	Topanga Historical Society.....	53
Dae-Myung Martial Arts Academy.....	25, 43	Mary Crescenzo Band .....	41	Topanga Living Cafe.....	61
Danshamir Green Cleaning Services.....	47	Menlo Scientific Acoustics, Inc..	21	Topanga Lumber & Hardware ..	47
David Carbo, Artist, Painter.....	19	Mervat Elias, Ceramic Artist.....	19, 63	Topanga Mountain School .....	27
Design for Living .....	15	Moona Star Collective.....	63	Topanga Muralist .....	19
Design Integration Group (DIG) / Malibu Solar Services.....	15	Mother Fox Jewelry .....	63	Topanga New Times.....	55
Ditch School .....	25	Old Canyon Stables.....	15	Topanga Properties.....	55
Document Your Home .....	47, 53	Omega Watches .....	63	Topanga Rocks.....	65
Dogs in Topanga, Poems of the Laughing Buddha.....	53	Pacific Coast Heating & Air .....	29	Topanga Symphony .....	41, 53
Drew Snyder.....	55	Pebbles.....	63	Topanga Women's Circle.....	53
Dunn Pellier Media .....	23, 43	Philip D'Arbanville.....	57	Transformational Health & Wellness.....	47
Eco-Rebel Trading House.....	47	Pilates in Topanga (Integration Studios) .....	27, 45	Waking State Design.....	43
Endless Color .....	59	Pilates MD.....	45	Water Lily Cafe.....	61
Ethos Film Awards .....	31	Pine Tree Circle.....	57	We All Feel.....	29, 47
Expo Propane .....	47	Porchia's WISH - Whole Integrated Self Health.....	29, 45	Wes Mathur Media .....	21, 53
Faces of the Future .....	23, 27	Printing Zone.....	43	Westside Video Service.....	21
Fair Hills Farms.....	13	Randy Chance Music School .....	27, 41	Will Geer Theatricum Botanicum.....	27, 41, 53
Family Health .....	43	Red Door Escape Room.....	41	William Preston Bowling.....	57
Franklin's Ace Hardware.....	47	Ronald Fomalont, Attorney at Law.....	49	Witch House Topanga ..	19, 27, 65
Friends of Topanga Library .....	51	Rosewood.....	13	Writer for Hire.....	25
Froggy's.....	59	Saar Shani Towing.....	23	Your Body Solutions.....	15, 47
Full Circle Compost.....	51	Saddle Peak Art Farm.....	19		
Georgia Saroj, 2D + 3D Artist.....	43	Sassafras Shoppe .....	63		
Get Started Playing Ukulele.....	31	Sarah Priest Design.....	57		
Gorgeous Goddess Wear.....	63	Sholty Construction and Design Associates.....	17, 29		
Greener Empowerment Foundation .....	51	Sienna Skin Care and Wellness ..	65		
Green Rodent Restoration ..	29, 47	Sonny Boy Studios .....	25, 43		
Hanna Elias Filmmaker.....	19	Sophie Zeiler.....	57		
		SUPERSOLUTIONARY.COM .....	21, 25		

## Topanga Chamber of Commerce MEMBER Index

Adam Roberts .....	21, 41, 53	Eva Annika Lundgren Carbo .....	19	Monica Zaidman .....	63
Adriana Lemus .....	59	Eva Sanchez-Calixtro.....	25	Nancy Marcucella.....	47
Adrian Wright .....	59	Freddi Swanson.....	59	Nancy Neal .....	63
Alexander Tarrant .....	29, 47	Gail McDonald-Tune .....	43	Neil Shaw .....	21
Alisa Land .....	49	Geoff Sheldon .....	17, 19	Nicole Dunn .....	23, 43
Amanda Sacks, LCSW .....	29, 47	Georgia Saroj.....	43	Pamela McBride .....	47
Amir Milani .....	13, 59	Giovanna Brandi.....	31	Pami Ozaki .....	63
Anabelle Munro .....	31	Hanna Elias .....	19	Pardeep Joshi.....	49
Andrew & Patricia Rasmusen..	19	Hannah Wear.....	15, 47, 51	Patricia Moore .....	51
Anne Christine von Wetter.....	57	Heather Bryant .....	25	Paul Astin, Ph.D. ....	57
Ann Lombardo .....	63	Helena Kriel .....	49	Paul Doolin .....	19, 63
Ariel Abt .....	25	Ingemar Hulthage.....	43	Paul Mesches.....	41
Ashley Lowengrub .....	61	James Grasso .....	53	Pauline Cohn.....	59
Azure Amanda Sutherland.....	45	Janek Dombrowa.....	13, 15	Peter Kagan .....	59
Bill Buerge .....	13, 21	Jane Marla Robbins .....	29, 53	Philip D'Arbanville.....	57
Bonnie Morgan .....	55	Janiese Finney .....	25, 43, 51	Pidge Jobst.....	19
Brian Gibson .....	47, 63, 65	Janise Blanc Chance.....	23, 65	Randy Chance.....	27, 41
Bruce Royer.....	47, 53	Jenni Klemp.....	51	Randy Neece.....	13
Calvin Taylor.....	59	Jenny Leimbrosk.....	31	Razmik Davidian .....	43
Carlo Petrini.....	15, 47	Jerome Kessler.....	41, 53	Richard Cassel .....	53, 57
Caroline PM Jones.....	19	Jessica Jacobs.....	25	Roberta Koehl.....	43, 57
Catherine Campbell .....	55	Jessica McGraw.....	61	Robert Novak.....	25, 43
Catherine Grasso.....	15	Jim Allen.....	29, 47	Robyn Bensinger.....	19
Cecilie Stuart.....	51	Jim Crawford .....	31	Roger Pugliese.....	51
Chantal von Wetter .....	55	Jim Sholty .....	17, 29	Ron Fomalont.....	49
Chip Kurzeka.....	47	Jocelyn Berry .....	27, 45	Ronnie Corbett .....	63
Chris Conway .....	17, 23	Joe G.....	29	Roxane Berger .....	17, 19
Chris Kelly .....	65	John Bertolli .....	29, 55	Saar Shani .....	23
Christian Sanders .....	41	Jordan Wright .....	59	Sally Powell .....	65
Christina Nelson .....	55	Joseph Rosendo .....	21	Sam Najah .....	21
Chryssa Lightheart.....	55	Joshua Kelfer .....	25	Sarah Priest.....	57
Claire Denis.....	59	Joy Taylor.....	27	Sasha Kramer .....	65
Clifton Smith.....	23, 27	Karin Benson .....	51	Scott Ferguson.....	53
Craig Lawrence Scher.....	23, 29	Kate Kimmel .....	59	Scott Vineberg .....	21, 25
Craig Phelps.....	49	Kathleen Gildred.....	63	Scott Wagenseller .....	17, 25
Curtis Caddell.....	29	Kevin Parkhurst .....	15, 47, 51	Sean O'Hara .....	47
Daniela Aguilar.....	47	Lance Roberts.....	59	Sean Faye Cullen .....	65, 19, 27
Dara Gerson.....	61	Laura Watts.....	63	Sherry Jason .....	31, 43
Darrell Hazen .....	63	Linda Ilsley .....	53	Shireesh Joshi.....	23
Darren Watson.....	17, 31	Lisa Alexandrian.....	29, 47	Simon Yoon .....	59
David Carbo .....	19	Lizanne Judge .....	17	Sophie Zeiler.....	57
Dayna Miller .....	13, 53	Lucile Yaney .....	59, 63	Tamara Gould.....	43
Deb Rivera .....	13	Mari Mira .....	47	Tanya Starceovich.....	57
Diana Mathur .....	25, 55	Marlene Frantz .....	19, 45	Teresa Royer .....	53
Dianne Porchia.....	29, 45	Mary Crescenzo .....	41, 45	Thomas Domino .....	19
Dr. Emily James .....	45, 63	Mary Guillermin.....	27, 41	Tiberon Trambille.....	65, 19, 27
Drew Snyder.....	55	Matthew Morgan.....	59	Tony Selvage .....	19, 31
Edison Park .....	25, 43	Matt Doolin .....	19, 63	Trudy Perry .....	15
Ed O'Neill .....	53	Max Kramer .....	49	Urs Baur .....	21, 41, 53
Ela Roth Capone .....	21	Melanie Papish .....	31	Victoria Petrovsky .....	23, 27
Elizabeth Flynn.....	15, 17, 61	Mervat Elias .....	19, 63	Wes Mathur .....	21, 53
Ellen Geer.....	27, 41, 53	Michele & Philip D'Arbanville..	45	William Preston Bowling.....	57
Emily James .....	45, 63	Michelle Donati.....	45	Willie Chaides.....	47
Enrico Busto.....	61	Mike Bae.....	59	Yanni Tan.....	63
Eric DeLeon.....	25	Mimi Engstrom Novak.....	59		

## Supporting Our Community Through Recovery

The Topanga Chamber of Commerce is dedicated to helping local businesses thrive as our community recovers from the January 2025 Palisades Fire, as well as the mudslides and road closures that followed. **Topanga shops and businesses are open!** While at the time of printing, Topanga Canyon Boulevard is partially closed—just south of Jalan Jalan Imports—we anticipate that by the time you read this, access to the coast, Santa Monica, and Malibu will once again be open, safe, and as convenient as ever. We appreciate your support of our local businesses during this time of renewal and resilience.



### In Honor of Our Heroes

We at the Topanga Chamber of Commerce salute the heroic efforts of our **firefighters** and **first responders**. **Thank you** for standing strong for all of us.



PRSRT STD  
US POSTAGE  
**PAID**  
TOPANGA, CA  
PERMIT No. 7

Topanga's Chamber of Commerce  
PO Box 185  
Topanga, CA 90290



*Postal Patron*  
*Topanga, CA 90290*

MATT DOOLIN, TOPANGA ART TILE

